

LIMA HISTORICAL SPOTS:

Kuhl Farm Records Date from 1830

Editor's Note: Land use in Lima township is changing, and in order to preserve the history of the town, the township is currently conducting a land use survey. A number of interesting stories have been unearthed concerning various houses and farms in the area, such as the Arthur Kuhl home, discussed below. More stories will be printed in coming issues of The Standard.

The home of Arthur and Edna Kuhl, 11701 Scio Church Rd., was in the news just over two years ago, when an almost complete skeleton of a prehistoric mastodon was found on the property. Discovered when the Kuhls were constructing a pond, the mastodon, an ancient, elephant-like creature, has been moved to the Museum of Paleontology in Ann Arbor.

Few traces have been found of life in the area between the age of the mastodons and the coming of permanent settlers. Historical records of the Kuhl property go back to 1830, when Jacob and Myron White, the first owners, obtained first 221.42 and later 160 acres from the U.

S. government. Soon thereafter, Olive White added two more grants, making a total of 541 acres. Around that time, it is reported, wolves were still more abundant than domestic animals in the Chelsea area.

From the Whites the property passed into the hands of the McLaren family. In 1835, five years after leaving New York to homestead "out West," Daniel and Sarah McLaren purchased a part of the White acreage for \$800. Several parcels of the farm were sold in 1846 and 1847 at tax sales for as little as \$3.27 for 60 acres and \$15.32 for a parcel of 80 acres. Numerous transactions took place from 1866 to 1874.

The farm house — the same one inhabited by the Kuhls until 1970 — was built in 1850, and ownership of the farm was passed on to Daniel and Sarah's son, James, and his wife, Virginia Duncan McLaren. During

their lives, it is said, the McLaren farmstead was the scene of many dances and parties to which people came from miles around. A special improvement made by James and Virginia was the establishment of a small cheese factory, where local people came to buy. The foundations

Quarterfinal Game In State Basketball Tourney Here

Even with districts and regional over, basketball season has still not ended in Chelsea.

Tonight, March 16, at 7 p.m., one game of the state quarterfinals will be played in the high school gym.

Seeing action will be Orchard Lake St. Mary's and East Jackson.

of the cheese building still remain beneath the grass of the lawn.

James and Virginia were the parents of 11 children. One son, Daniel, went on to become president of the Kempf Bank in Chelsea and a prominent hay dealer; another, Wilbur or "Wick," went to the University of Michigan and later obtained most of the farm. One of his sons, Myron, was last known to be associated with an eastern college.

The McLaren worked their farm with horses and oxen. Dan is known to have spent long hours walking besides the oxen to prod them along while working in the fields, and the barn, which is still standing, once housed 16 work horses. There are stories of Wilbur having cattle shipped from the west and then driving them the 8 miles from Chelsea to the farm on foot.

For the past 40 years, the

property has been in the hands of the Kuhls. In their four decades on the farm, they have cleared tons of rocks from the land, planted about 11,000 trees, and put in miles of tiling and ditches to improve the farm. In 1970, a new home was built.

It was just prior to the building of the house when the exciting discovery of mastodon bones was made. The Kuhls were in the process of digging a pond when Clayton Griffin, working on the pond, discovered a huge tusk, several ribs, and a jawbone. He immediately alerted Kuhl, who in turn contacted the University of Michigan's Museum of Paleontology. University students and professors were sent, and about three-fourths of a complete skeleton were unearthed. The bones have been treated and labeled and are currently being studied at the University. According to museum experts, they had been buried for approximately 25,000 years.



HUGE MASTODONS once roamed on this property; centuries later, it became the site of one of the area's earliest cheese factories. The farm is now the home of Edna and Arthur Kuhl and is located at 11701 Scio Church Rd. First owned by the White family and then by the McLaren, the

property has been in the hands of the Kuhls for 40 years now. Two years ago, the skeleton of a huge male mastodon, a prehistoric creature resembling the elephant, was discovered near the site of the present Kuhl home.

QUOTE

"In all the affairs of life, social as well as political, courtesies of a small and trivial character are the ones which strike deepest in the grateful and appreciating heart."

—Henry Clay

WEATHER

	Min.	Max.	Precip.
Wednesday, March 8	17	32	Trace
Thursday, March 9	12	27	Trace
Friday, March 10	10	30	Trace
Saturday, March 11	31	35	0.00
Sunday, March 12	26	33	0.00
Monday, March 13	22	35	0.06
Tuesday, March 14	32	35	0.87

By H. K. L.

The Chelsea Standard

ONE HUNDRED-SECOND YEAR—No. 39

12 Pages This Week

2 Plus Supplements

CHELSEA, MICHIGAN, THURSDAY, MARCH 16, 1972

15c per copy

SUBSCRIPTION: \$4.00 PER YEAR

Independents All Elected in Village Voting

Rainy weather combined with a one-party election to produce a voter turn-out of only 114, 13 percent of those registered, in Monday's village election. The entire Independent slate was elected.

Top vote getter was Wallace C. Wood, re-elected for treasurer, who received 107 votes. Also re-elected were incumbents A. B. Pulks, president; Thomas C. Smith, assessor; Keith Boylan and Thomas Dmoch, trustees; and Anne Belser and Shirley Schaeble, library board trustees. Don Wood was elected to his first term as trustee.

There were two write-in votes cast in the election, one for Paul B. Smith and one for Charles Ritter, both for the position of trustee.

All terms are for two years with the exception of the library board trustees, whose terms run three years.

Named Coach Of the Year

Phil Bareis, head football coach at Chelsea High school, has been named Coach of the Year by the Jackson Area Coaches Association. Casting ballots were approximately 100 area football coaches belonging to the association.

Bareis, in his six years as head coach at Chelsea High, has compiled a 37-13-2 over-all record. After two losing seasons, his teams have come up with 8-1, 9-0, 7-2, and 9-0 records in the past four years. The 1971 squad was considered to be the top Class B team in the state.

Before coming to Chelsea, Bareis coached for six years at Clinton, four of them as head coach.

River Rouge Wins District In Overtime

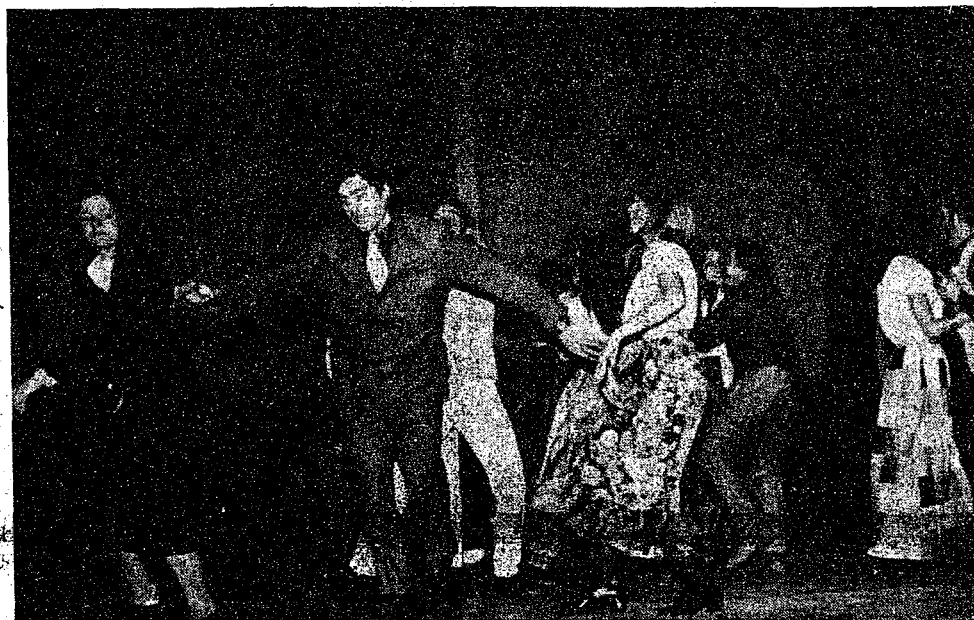
Crowds of nearly 2,000 filled the Chelsea High school gym several nights last week for the regional basketball tournament, won by River Rouge Saturday night in a tight overtime match.

In Wednesday and Thursday's semi-finals, Grosse Ile out-scored Monroe Catholic Central, 82-71, while River Rouge trounced Pinckney, 75-55. Grosse Ile dominated their entire game, leading, 57-47, at the half and maintaining a lead of about 10 points throughout the final two quarters. Leading scorers were Mark Howard and Jim Reid for Grosse Ile with 24 and 22 points, respectively, and Joe Kavanagh for Monroe Catholic Central with 20.

The Thursday night contest was a runaway affair, with Pinckney never coming within 6 or 7 points of River Rouge. Ahead 33-27 at the half, River Rouge came on strong in the last five minutes to pile on the 20-point victory. High scorers were Del Steele for Rouge and Terry Turnbull for Pinckney.

Saturday's championship match was the closest of the tournament. Grosse Ile led most of the way, but with 40 seconds to go, Rouge tied the score at 66-66. With two seconds remaining Grosse Ile tried for one last shot but missed, sending

(Continued on page five)



FENDING THEM OFF: In a scene from Chelsea High school's "Guys and Dolls," Sky Masterson (center), played by Keith Pfeifle, stands torn between two women, Sarah Brown (left), played by Jeanne Haselschwardt, and a Cuban dancer (right), played by Kristi McClansky. "Guys and Dolls" depicts the unexpected romance of Sky

and Sarah, a gambler and a Salvation Army worker. Here, the two have gone to Havana for an evening on the town, and both discover jealousy when watching the other dancing with someone else. Performances are tonight at 8:30 and Friday and Saturday at 8 at the high school.

Report on Lima Townships Land-Use Study Due Monday

Phase I of the Lima township land-use study will be reported on at a meeting Monday, March 20, at 8 p.m. at the Lima Township Hall.

The meeting was requested by Johnson, Johnson & Roy, the landscape architecture firm conducting the study. Attending the meeting will be representatives off the Lima township board, the township planning commission, the Huron-Clinton Metropolitan Authority (HCMA) and the Washtenaw county planning staff. The meeting is open to the public, and township planners are urging all area residents to attend.

The land-use study was originally proposed by the township planners to the HCMA, arguing that because the HCMA's proposed Mill Creek park would have such a huge impact on the area, it was up to the HCMA to support an investigation into its specific

impact on the township and environment. Last summer the two parties agreed to contract with Johnson, Johnson & Roy, who began their study around Feb. 1.

The study is being jointly financed by HCMA and the Lima planners. Phase I of the study, the topic of Monday's meeting, is an analysis of the township as it is today—what it is, what its land capabilities are, where growth has taken place. Upon completion of Phase I, the consultants will turn to Phase II, alternative concepts for the future of the township. The second phase is expected to take three to four more weeks of research.

According to planning commission chairman Bill Van Riper, the land use study encompasses much more than just the park issue. Perhaps 10 percent of the study, he estimates, deals with the park question. The HCMA's interest, however, centers mainly around possible road closures in the park area, ingress and egress routes into the proposed park, and zoning of surrounding property. Phase II, Van Riper reports, will include alternatives both with and without the park.

Van Riper strongly urges township residents to attend the meeting, noting that "what comes out of this meeting will be no better than what the township residents want."

Ceramics Shop Now Open On Main St.

You open the door, and suddenly it's Easter. Bunnies, chickens, and eggs of all colors—plus a few not so Easter-like animals, such as frogs and squirrels. It's all in ceramics, on display at the newly opened Potts 'n' Paints shop at 120 S. Main St.

All the pieces are the work of John and Faye Bergery and their nephew, James Moore, proprietors of the shop. The three work together on ceramics production, and in addition, John Bergery paints the pictures which also are on display.

Potts 'n' Paints is a varied shop; (Continued on page five)

Guys & Dolls Musical Opens Tonight at CHS

"Luck be a Lady Tonight," "A Bushel and A Peck," "Fugue for Ten Horns," "If I Were a Bell." Familiar songs? They'll all be performed tonight, Friday and Saturday, — along with many others — in Chelsea High school's "Guys and Dolls."

More than 100 students are involved as cast, chorus, and crew in this year's musical. Under the direction of vocal music teacher DIAnn L'Roy, they have been working since January to turn themselves into gamblers and hot-box girls and to create the mood of Broadway in the twenties.

"Guys and Dolls" is a double love story, with action centering around the romances of two quite different couples. Miss Adelaide, played by Anne McKernan, a night club singer and the leader of the Hotbox girls, has been engaged for 14 years to Nathan Detroit, operator of "the oldest established floating crap game in New York" and played by Ed Koengeter. There's something about Nathan's love for gambling that keeps the wedding from taking place.

The other romance blossoms unexpectedly between Sky Masterson, a big-time gambler played by Keith Pfeifle, and Sarah Brown, a Salvation Army nurse and head of the Save-a-Soul Mission, played by Jeanne Haselschwardt. Other leading roles are Nicely-Nicely Johnson, played by Tom Hubert, and Benny, played by Dave Hess.

This is the sixth musical in succession directed by Miss L'Roy, who is assisted by student director Joanne Harvey. Other crew chairmen include Jon Schenk and Ric Foytik, set design; Dennis Landwehr, set construction; Janice Schenk, costumes; Marijo Bott and Marcia Johnson, props; Tom Williams, makeup; Sue Dillam and Dana Check, publicity; Laurel Primizing, programs; and Dave Powers and Tom McKernan, tickets and ushers.

Music will be provided by some members of Chelsea High school bands along with others from the John Glenn High school in Westland, who last week put on "Guys and Dolls."

The musicals will be performed Friday, March 17, and Saturday, March 18, at 8 p.m. and Thursday, March 16, at 8:30, the late start Thursday resulting from the decision to hold a quarterfinals basketball game in the Chelsea gymnasium that night. In an effort to minimize traffic congestion, school officials have put 10 people on special duty in the parking lot and will reserve 150-200 parking spaces for play patrons.

Community Chest Officers Elected For Coming Year

The Chelsea Community Chest has announced its officers for the coming year. They include Robert Thornton, president; Conrad Hafner, vice-president; Mrs. Art Steinaway, secretary; and Mrs. Donald Baldwin, treasurer.

Also announced recently are the various Community Chest working committees. David Rowe will head the campaign committee for 1972 and will be assisted by Paul Freisinger, Markelita Satterthwaite, Conrad Hafner, James Hoffmeyer, and Dick Harvey. The budget committee, headed by Tony Bowen, includes Pat Whitesall, Sam Johnson, Ann Schaffner, Roy Greenleaf, Bob Kozma, and Anne Steinaway.

James Hoffmeyer will handle promotion, and James Liebeck is in charge of finance, assisted by Bob Kozma and Lou Mueck. The nominating committee is composed of Claude Arnett, chairman, and Ann Schaffner, Margaret Kuhl, Norma Popovich, and Bob Heller.

Preparations for this year's edition of the Chevrolet All-American Soap Box Derby—also known as the World Gravity Grand Prix—has resulted in plans for the largest and most competitive local derby race ever held—the Washtenaw County Soap Box Derby.

An orientation meeting for all boys and girls interested in entering the derby will be held this coming Saturday, March 18, at the Moose Lodge on S. Maple Rd., Ann Arbor, at 1:30 p.m. On tap will be a general discussion concerning derby rules and regulations, a tentative schedule of clinic and trial run dates, and the showing of a movie featuring last year's National Derby Race.

In attendance will be last year's local derby winner, Mark Immonen. Mark's car will also be on display. (Continued on page three)



SQUARE DANCE: Girl Scouts from Cadette Troop 98 pose in their costumes, worn for a performance of a "crown square dance" at the annual Scout Father-Daughter Banquet, held March 13. The girls are (left to right) Tracy Updegraff, Judy

Janes, Julie Worden, Anna Marie Speer, Linda Sue Dorr, Diane Haworth, Julie Tucker, Pam Hinz, and Connie Connelley. Troop leaders (not pictured) are Janice Poquette and Sandy Ellenwood.

Girl Scout Week Observed At Father-Daughter Banquet

Chelsea Girl Scouts and their dads celebrated the 60th anniversary of Girl Scouting Monday night with a pot-luck banquet at the Beach school. Each father-daughter team brought a dish to pass, and each troop provided a skit, song, or dance.

Entertainment included a demonstration by a Brownie troop of how to build a campfire, a modern dance, a Brazilian folk dance, and a variety of songs. Bernice Pierson of Troop 98 was mistress of ceremonies, and Michelle Hafner

of Troop 47 gave a presentation on the Juliette Low Fund, set up by Juliette Low, the founder of Girl Scouting, as an international friendship fund.

Representatives from each troop presented the money their troop had collected for the fund.

There was also an inter-troop flag ceremony, performed by Any Check of Troop 84, Patty Luck of Troop 169, Elaine Meyer of Troop 287, Nancy Heller of Troop 146, Chris Check of Troop 82, Jill Jones of Troop 58, Valisa Fletcher of

Troop 47, and Cindy Miller of Troop 98.

The banquet was part of Girl Scout Week, which started Sunday, March 12, with girls wearing their uniforms to their place of worship. Each day of the week has a different emphasis on the foundation elements of Girl Scouting, including homemaking, citizenship, health and safety, international friendship, the arts, and the out-of-doors.

Throughout the week, Girl Scout exhibits have been on display in windows along Main St.

Brotherhood Sing-A-Long Slated Tuesday

"I'd like to teach the world to sing in perfect harmony . . ."

The song is familiar to most of us, and will be even more so after next Tuesday's "world-wide brotherhood sing-a-long," sponsored by the Jaycees.

The idea is that at 10 a.m. EST on March 21, business will stop for awhile and people will join together in song. March 21 has been designated by Governor Milliken as Brotherhood Day, and it is hoped that the sing-a-long will be a national and even world-wide celebration.

In Chelsea, classes at all four schools—the high school, Beach school, and the elementary schools—will be stopped at 10 a.m. to participate in singing. The singing will be led by any radio station over the public address system. The Jaycees have urged shops, offices, stores, and industry to allow their personnel to unite in song.

(Continued on page three)



Washington Report by Congressman MARVIN L. ESCH

A key factor in our nation's economic recovery is the restoration of our balance of trade. One of the major reasons that the United States has been so prosperous in the past few years is its status as a great exporting nation. More than 2,000,000 jobs in the U. S. are totally supported by our international trade.

That is one of the most important portions of the President's economic policy centered on the devaluation of the dollar. Trade rather than policy matters has become the issue of pre-eminent concern in our international diplomatic relations. That is also why the Congress should take quick action on the recommendation that the United States begin converting to the metric system of measurement. I have joined in introducing a bill that is now before my committee, that accomplishes this objective.

The United States is the only major nation in the world which is not on, or converting to, the metric system. If we are to continue to be a world leader in trade, it is important that we manufacture items which are compatible with the economies of other nations. All of our military allies are either on a metric system now or are changing to one. Future military co-ordination and logistics would certainly be simplified if we too converted to the metric system.

The metric system — which is based on measurements in multiples of 10 — makes sense because it is far easier to calculate. If we had a metric system there would be no need for the small school child to attempt to memorize and make sense out of the extremely awkward measurements we now use — 5,280 feet per mile, 12 inches per foot, 16 oz. per pound, or even more confusing the difference between a fluid oz. and one oz. of weight. I'm sure all of us can remember muzzling over what seemed to be endless new and complicated measurements in our arithmetic classes. Multiplying by 12 inches to get an answer is certainly more complicated than multiplying by 10!

The Congress two years ago authorized a complete study on the costs and problems of converting to a metric system. The Commerce Department report, which is contained in 112 extensive and technical volumes, recommends overwhelmingly that we begin now to plan a rational and long-term program for changing to the metric system. Following the British example, any plan would probably take place over at least 10 years — and perhaps somewhat longer.

This is not the first time that the Congress has received a strong recommendation for a metric system. President George Washington and his brilliant Secretary of State Thomas Jefferson submitted the first plan nearly 200 years ago. It would be another fitting tribute to their foresightedness if we were to accept that recommendation in time for the bicentennial.

There will be no immediate effect on international trade as a result of this recommendation. However, it is the responsibility of the Congress not only to deal with the urgent problems of the present, but to look ahead to avoid problems in the future. That is why I am hopeful that the Congress will this year accept the nearly unanimous recommendations of the experts, and that we will soon be measuring things by the meter rather than inch.



From Mrs. William Fehrs, Sr., Woodhaven, N.Y.: I remember our school, which was torn down a long time ago. It had a tower at the top of the roof where the Minutemen were stationed, waiting for the British to appear. One teacher told my brother that the principal would go up in the tower with a spy glass to watch for boys that were going to skip school. I remember we had one teacher for the whole term, and in addition to our studies, we learned manners and respect.

Our neighbors were poor, but my father, being a roofer, made a good salary. Once he bought a phonograph with a morning-glory horn. He invited everybody in and started playing "The Star Spangled Banner." When he played "Home Sweet Home," they knew it was time to leave.

During World War I, there were large barrels in front of stores with signs that read "Drop all your peach pits here, so we will have enough to make charcoal for the gas masks for our boys over there."

If a product is labeled "chicken meat" or "turkey meat," it refers to only the light and dark meat in natural proportions. The terms "chicken" or "turkey" alone refer to the meat plus skin and fat.



the
most
famous
basket
in the
world*

Welcome Wagon
PHONE 426-8897



★ MICHIGAN MIRROR ★

By Elmer E. White, Secretary, Michigan Press Association

Billboard Control Sought

Action in the legislature to control billboards is not motivated solely by a desire to keep the roadsides of Michigan free from an unsightly clutter of outdoor advertisements.

Michigan is one of 12 states which were notified they don't have enough controls on billboards to meet federal guidelines. Without a toughening of those guidelines, Michigan stands to lose \$10.6 million in federal highway money.

The 12 states together may lose a total of \$198 million if they don't move to control billboards. That sum would be spread among the states which have adequate restrictions.

The federal action was taken by the Department of Transportation under powers given it in the Highway Beautification Act.

The act authorizes the department to establish guidelines for billboard control. The secretary of transportation may penalize states which fail to comply with the guidelines by withholding 10 percent of their federal highway allotments.

The state which stands to lose the most money if it doesn't toughen its laws is Illinois, which has \$32.4 million at stake. Second is Texas with \$23.9 million, and Michigan is third.

Renter Protection

One of the unpleasant problems which can develop between a renter and the landlord involves the handling of the damage deposit.

The deposit is a sum of money, usually the equivalent of one month's rent but sometimes more, which the renter hands over to the landlord as security in case the property rented is damaged. If there is no damage, the renter is supposed to get the money back when he leaves.

Unfortunately, things don't work at times as they're supposed to. Some renters find landlords try to hold them responsible for damages existing when they moved in. Others believe landlords try to charge them for such normal wear as fading paint or the wearing down of a rug rather than for actual damages.

And some renters object to the idea of handing over a substantial amount of money to another person or company over a period of time with the company or person using the money interest free and perhaps investing it for themselves.

That situation may change.

A bill has been introduced in the House by Rep. Earl Nelson, D-Lansing, to rectify some of the problems and set up some safeguards. It is the result of a year-long study of the situation conducted by a special committee appointed by Speaker William Nelson and headed by Nelson.

Among the things Nelson's bill do are:

—limit deposits to no more than one month's rent.

—require the landlord to keep the deposit separate from his own money and pay interest on it to the tenant.

—return the full deposit to the tenant when the tenant moves out or initiate court action to keep part of the deposit if damage occurs. If the landlord does not do either within 30 days, the tenant is entitled to double the deposit back.

"As a result of the testimonies from the hearings I felt that we needed a set of logical rules to insure that the rights and responsibilities of both the tenant and the landlord were protected and enforced," Nelson says. "The provisions in this bill are a step in the right direction."

If the bill is adopted, it would seem that it would at least make it clearer where each side stands and reduce potential for much conflict.

Signs Added

Motorists familiar with the "gas, food, lodging" signs found on freeways to advise of the services at the next exit will soon be seeing two additions to some of those signs.

The additions will be the words — when appropriate — "hospital" and "camping."

The hospital sign will mean a state licensed hospital is located within five miles of the exit with a physician on duty 24 hours a day and continuous emergency service.

The camping sign will mean state licensed camping facilities with at least 50 campsites, electricity, showers, flush toilets and a public telephone are located within five miles of the exit.

MSU DORMITORIES

East Lansing—Michigan State University has the largest single campus residence hall system in the nation. Last fall, 17,538 students lived in MSU's 29 residence halls.

Watch for Spring
Thru Quality Lenses and Frames
from

WINANS OPTICAL

PHONE 475-1233

114 N. Main (in Sylvan Hotel) Chelsea, Mich.

DAVID WINANS, Optician

(30 Years with Johnston Optical Co.)

APPOINTMENTS NOT NECESSARY

Dexter Township
SETTLEMENT DAY
MEETING

Tuesday, March 21, 1972
8:00 p.m.

Dexter Township Hall
6880 Dexter-Pinkney Road

DEXTER TOWNSHIP
WILLIAM EISENBEISER, CLERK

SING-ALONG MUSIC at INVERNESS INN
NORTH LAKE

Saturday Nights - 9:30 p.m. to 1:30 a.m.

Music By
JIM ROMINE and GARY SCRIPTER

YOUR FAVORITE SANDWICHES
SHRIMP, CHICKEN & FISH DINNERS

BEER - WINE - LIQUOR

JUST REMINISCING

Items Taken from the Files of The Chelsea Standard

4 Years Ago...

Thursday, March 21, 1968—

Chelsea State Bank will hold a public open house Saturday to celebrate the recent opening of its new building. There will be refreshments, souvenirs, and surprises for the children.

Ralph Guenther of Guenther studio received state recognition for two portraits which he had submitted in the 27th annual Professional Photographers of Michigan convention. The portraits were of Dan Clark and Mrs. Jock Crawford, daughter of Mr. and Mrs. Martin Johnson of Chelsea.

Sandra Lee Knoll has been chosen as one of the 15 finalists for the first annual Miss Ann Arbor Pageant.

Mr. and Mrs. John A. Myers of 412 Wilkinson St., will celebrate their 62nd wedding anniversary Sunday with members of their family.

At a recent meeting of the Jaycees, Mrs. Lloyd Swan was presented on award as Jaycee of the Year. She will now go on to district and state competitions.

At a regular monthly meeting of the Chelsea Chamber of Commerce David Logan, local Junior Achievement leader, spoke on the organization of the JA in Chelsea, its purposes, and the advantages it offers to Chelsea area youth.

Returning to Chelsea March 6 after spending the winter term abroad studying in France is James K. Cameron, son of Mr. and Mrs. Charles S. Cameron. Cameron, a junior at Kalamazoo College, has been studying in Aix-en-Provence since Sept. 11.

14 Years Ago...

Thursday, March 20, 1958—

With a scholastic record of 3.87 out of a possible 4.00 for her four years in high school, Judith Lynn Wagner, daughter of Mr. and Mrs. Robert Wagner, is to be valedictorian of the Chelsea High graduating class this year. Sandra Kay Buehler, with an average of 3.83 for her four years, will be salutatorian.

Janet Widmayer received a bachelor of science degree in home economics, vocational education at the winter term commencement exercises of Michigan State University. Miss Widmayer is affiliated with Omicron Nu, home economics honorary, and has been pledged for membership in the National Honor Society of Phi Kappa Phi.

Members of the Chelsea Public Library Board met Tuesday evening to organize and name officers and committees for the year. Miss Mahle Fox was elected president; Mrs. John Fischer, vice-president; Mrs. Thomas Bust, secretary, and Mrs. E. W. Eaton, treasurer.

Dennis T. Gary, Chelsea High school senior, has been commended by the National Merit Scholarship Corporation for his outstanding performance on a nation-wide college aptitude test, according to Principal Charles Lane.

Past Noble Grand of Rehekah Lodge met Thursday at the home of Mrs. Emerson Lesser for a pot-luck supper followed by games. Mrs. Lynn Kern was co-hostess. The vice-president, Mrs. Russell Altstaetter, presided at a brief business session. High prize in the games went to Mrs. Lesser, and low to Mrs. Elwood Keezer.

24 Years Ago...

Thursday, March 18, 1948—

Members and guests numbering 110 attended the annual Farmers Night meeting of the Kiwanis club. Featured entertainment of the evening was the music of Ar-

thur Budreau, Sr., and four of his sons, Donald, Arthur, Jr., Bob, and Bernard. The boys range in age from 9 to 12.

At the regular meeting of the Chelsea Library Board, held Tuesday evening in the library, the following officers were elected for the new year: Mrs. E. W. Eaton, president; Mrs. Doris Rogers, vice-president; Mrs. R. W. Wagner, secretary, and Mrs. Armin Schneider, treasurer. A proposed budget of \$3,807 was adopted for the coming year.

The Juniors at Chelsea High this year have chosen the comedy hit "A Date with Judy" to be performed Friday, March 19. Starring as Judy Foster is Joyce Crawford, Robert Stofer as her "date," Oogie Primola. Judy's parents are played by David Lane and Donna Kalmbach, her bosom buddies by Mary K. Palmer and Margaret Mary Dumouchel.

The Student Council at Chelsea Public school held an All-Hi party last Friday for students and parents.

Quite a few parents were present, although few of them danced. The gym floor was so crowded that most people merely stood in one position and swayed in time to the music. Clare Knickerbocker played the records, some of which were "Ballarina," "Near You," "Squeeze Me," and "Now Is the Hour."

Pfc. Roland J. Heim, son of Mr. and Mrs. Louis Heim, has recently left Osaka, Japan, for discharge and return home. Pfc. Heim entered the Army on Oct. 5, 1946, and received his basic training at Ft. Knox, Ky. Before entering the service he attended Chelsea High school and upon graduation assisted his father.

34 Years Ago...

Thursday, March 17, 1938—

The Independent Party ticket was the only one in the field at the annual village election, consequently a small vote was cast—a total of 205. The proposition of maintaining a free public library carried by a majority of six, 103 for and 97 against the measure.

Added to the present militant forces who are driving home the real facts about alcohol comes C. F. Hewlett of Chelsea. Under the auspices of the National Voice, America's oldest weekly prohibition paper, to which Hewlett has just been appointed Michigan speaker, he made his initial appearance in Coldwater last week, speaking to the Branch county Temperance League.

George T. English announced on Monday that he was about ready to open a museum of oddities. The past week twin lambs were born at his farm, one of which has six

**MONEY
TROUBLE?
ONE PLACE TO PAY!
Credit Management
Service
662-2565
215 South Fifth Ave.
Ann Arbor
State Licensed and Bonded**

PUNCH LINE OF THE WEEK



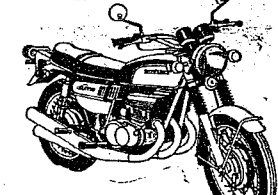
legs. The two extra legs are normal in every respect but length. The lambs do not seem to mind the six legs and is as lively as its twin.

The Chat 'n' Seau held a costume party at the home of Mrs. J. J. Munro. Mrs. R. W. Barber was awarded the prize for the best costume; she wore the wedding gown of the late Mrs. Fred Niehaus. Others were costumed as bathing beauties and Egyptian dancers. Mrs. Ed. Frymuth won high score and Miss Florence Ward low score in bingo.

Five students at Chelsea Public school made four A's last term. They were Roy Broesamie, Margaret Hamper, Carolyn Kalmbach, Grace Riemenschneider, and Ruth Yetall.

The
Suzuki GT-550.
Look out
competition
you're being
passed.

The bike you've been waiting for. A big new 3-cylinder that'll pass just about anybody. 50 hp/6500 rpm. 110-115 mph. 4 pipes, 3 carbs, 5 speeds. CCI automatic lube. Electric starter. 5-way adjustable rear shocks. If you know Suzuki® some guys you've been asking for it, now you've got the answer.



**SUZUKI
ANN ARBOR
INC.**

4040 Washtenaw Ave. at US-23
2 Blocks East of Arborland
OPEN MON.-SAT. 9 to 9

**STORE-WIDE
SALE**

**NOW IN PROGRESS
at Sharp Reductions!**

Stop in now to choose
while the selection
is still good!

**WE NEED TO
CLEAR OUT PRESENT
FLOOR INVENTORY**

Help us move out some of our present inventory of fine furniture and appliances to make room for a flood of new spring merchandise. Shipments are arriving and we desperately need the space!

**MEABON'S
TV, FURNITURE & APPLIANCES**

1170 S. M-52, Chelsea Phone 475-5191

Established 1871 The Chelsea Standard Telephone GR 5-8551

Excellence Award By Michigan Press Association
1951-1952-1960-1964-1965-1966

Walter P. Leonard, Editor and Publisher

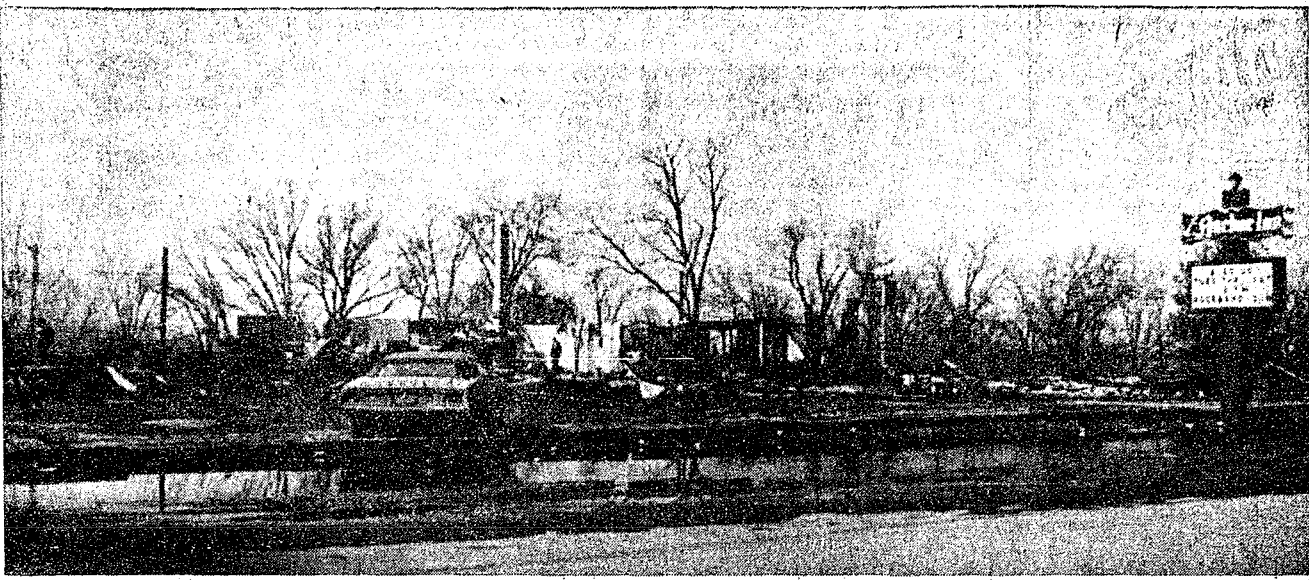
Published every Thursday morning at 800 North Main Street, Chelsea, Mich. 48118, and second class postage paid at Chelsea, Mich., under the Act of March 3, 1879.

Subscription Rates (Payable in Advance)

In Michigan:		Outside Michigan:	
One Year	\$4.00	One Year	\$6.00
Six Months	\$2.25	Six Months	\$3.50
Single Copies	\$.15	Single Copies	\$.20
Service men or women, anywhere, 1 year		\$4.00	

MEMBER
**NATIONAL
NEWSPAPER**
Association - Founded 1888

National Advertising Representative:
MICHIGAN NEWSPAPERS, INC.
257 Michigan Ave.
East Lansing, Mich. 48823



ALL GONE: The Anchor Inn, a rambling building of 40 years which grew from a tavern to a roadhouse to a go-go hall, went up in flames early Saturday morning that three fire departments fought four and one-half hours to quench. Located on McGregor Rd. at Portage Lake, the inn had just changed ownership in December.

Runaway Girl Taken to Juvenile Detention Home

Friday night a Chelsea High school girl ran away from home and was taken Saturday to Juvenile Detention in Ann Arbor when she refused to return home.

The girl, a ninth grader, left home Friday to go to a basketball game and was reported missing by police, but when she had not returned home. She was found by police but, when she would not go home with her parents, she was taken to Ann Arbor.

On Monday, March 13, her parents picked her up and she returned home.

Many a man keeps this nose on the grindstone so wife can turn up hers at the neighbors.

Flames Destroy Anchor Inn

One of the area's most colorful landmarks was destroyed early Saturday morning as flames engulfed and consumed the Anchor Inn on McGregor Rd., at Portage Lake.

As of Tuesday afternoon the Sheriff's Department of Livingston county had no further word on the possible cause of the disastrous fire which was reported at 8 a.m. Saturday morning, a bare 20 minutes after the last employee had left the premises.

Deer fire fighters, arriving at the inn only six minutes after the call came, found the entire building ablaze. Fire departments from Hamburg and Pinckney were also at the scene in a fruitless effort

to save any part of the rambling frame building which was approximately 40 years old.

A former owner, Alex Ammann, reported the building opened in 1934 as a tavern called the Little Red Hen and became the Anchor Inn sometime during the early 40's. The present owner, Robert Welch of Detroit, had just purchased the inn in December of last year.

There was a strong wind Friday night and early Saturday and according to fire officials the blaze

began right where the wind could best get at it, in the southwest corner of the building in the area of the two bars.

In recent years the Anchor Inn had been popular as a topless go-go night club which either pleased or rankled the area residents, depending on who one asked.

There were no injuries and there was no damage to nearby homes when the fire was extinguished about 7:30 a.m., but as one source said, "the go-go joint is gone."

Sing-A-Long Slated Tuesday May Be World-Wide Event

(Continued from page one)

The idea came unexpectedly to a Howell Jaycee when he heard the song, familiar in part as a Coca-Cola commercial, over the radio, and associated its lyrics with a phrase from the International Jaycee creed, "that the brotherhood of man transcends the sovereignty of nations."

March 21 was chosen as the date for the "brotherhood break" because of its symbolic importance as the Vernal Equinox, the day when winter turns into spring.

"This song by its wording alone, if we are successful in our campaign, will act as a magnet to draw people together throughout this country as well as the world," Ed Greenleaf, Chelsea program chairman has stated.

"This sing-along is not associated or identified with any issue, group or object other than the recognition of world-wide brotherhood, the president of the Michigan Jaycees has said, adding, "express your feelings by joining the world in song on March 21."

The words to the song are as follows:

"I'd like to build the world a home and furnish it with love. Grow apple trees and honey bees and snow-white turtle doves. I'd like to teach the world to sing in perfect harmony. I'd like to hold it in my arms and keep it company. I'd like to see the world for once all standing hand in hand."

And hear them echo through the hills for peace throughout the land."

Soap Box...

(Continued from page one)

Rampy Chevrolet is again prime sponsor for the event, co-sponsored by a group of eight Jaycee chapters from Chelsea, Manchester, Pinckney, Saline, Milan, Dexter, Ypsilanti, and Ann Arbor. Each Jaycee chapter will be responsible for handling derby preparation activities in its respective community and the trial runs, final inspection, and race day activities will be handled as one combined effort.

The derby is scheduled to be held on S. Main St. in Ann Arbor, on July 22. The winner here will receive a \$500 Savings Bond, a number of local wares, and, of course, the right to compete in the All-American Soap Box Derby this coming August in Akron, O.

Derby competition is open to any boy or girl who will be 11 through 15 years of age on Aug. 1, 1972. No prior derby winners are eligible. Entry blanks and rule books may be obtained by contacting Chelsea's co-ordinating Jaycee representative, Mike Eubanks, 475-2882. Entries will be received through April 8.

Subscribe today to The Standard!



Right start money-making

FEEDS

Step up milk production, with Dairy Feeds, scientifically formulated, balanced and blended to make more "milk" and more profits.



Complete feeding rations for all your livestock, poultry.

FARMERS' SUPPLY CO.
PHONE GR 5-5511

It's SPRING

in
All Departments

Ladies - Men's - Girls'
Boys' - Infants'
Yard Goods - Notions

Shop Now While
Our Selections Are Good!

THE BARGAIN FLOOR
Is A Great Place
To Browse for

BIG SAVINGS
1/3 to 1/2 and More Off

SHOP

DANCER'S

Chelsea's Friendly Dept. Store

SPECIAL BRAZIER CHEESEBURGER FRENCH FRIES and SMALL DRINK

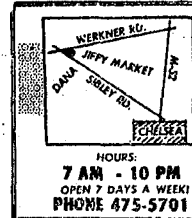
99¢

Some of the Brazier foods



brazier

901 S. MAIN ST., CHELSEA PHONE 475-2677



Jiffy market

BIG ENOUGH TO SERVE YOU.....SMALL ENOUGH TO KNOW YOU!
Corner of SIBLEY & WERKNER RDS....CHELSEA, MICHIGAN

SALE PRICES EFFECTIVE THURSDAY, MARCH 16, THRU SUNDAY, MARCH 19, 1972.

Store Hours Are 7 a.m. to 10 p.m. 7 Days A Week

U.S.D.A. CHOICE		YOUNG TENDER	AGAR
STEAK SALE		BEEF LIVER	CANNED HAM
SIRLOIN . . lb. \$1.39			
T-BONE . . lb. \$1.49		49¢ lb.	5 lbs. \$4.49
Porterhouse . lb. \$1.59			SLICED FREE

HYGRADE'S	ECKRICH	CIRCLE A	LEAN, FRESH	FARMER PEET'S
Ball Park FRANKS	BOLOGNA	Thick Sliced BACON	Hamburger	SHORTENING
89¢ lb.	1-Lb. Pkg. 99¢ lb.	2-Lb. Pkg. \$1.19	73¢ lb. SATISFACTION GUARANTEED!	2-Lb. Pack 45¢

Macaroni - Spaghetti . .	Prince Brand	2-Lb. Pkg.	29¢
---------------------------------	--------------	------------	------------

BUNNY POP	MICHIGAN	40-Lb. & 80-Lb. Bags	SILVER FLOSS	ABSOPURE
POPCORN	SOUR CREAM	SALT NUGGETS	Sauerkraut	DISTILLED WATER
Yellow or White				
2-Lb. Pkg. 19¢	Pint 39¢	40-Lb. Bag \$1.29	1-Lb. 11-Oz. Can 29¢	39¢ gal.

PEPSI-COLA . . .	10-Oz. No-Return Bottles	8 pat	89¢
-------------------------	--------------------------	-------	------------

KLEEN-MAID	JESTER	RISDON'S	ADAMS	PRODUCT OF FINLAND
BREAD	CANNED DOG FOOD	HOMOGENIZED MILK	CARAMEL CORN	Hellas Chocolate
Way Baking Co.	Beef - Chicken - Liver		With Peanuts	5 3 1/2-Oz. Bars \$1.00
1 1/4-Lb. Loaf 18¢	15 1/2-Oz. Can 9¢	1/2-Gal. Crtn. 45¢	11 1/2-Oz. Plastic Container 49¢	Mint - Raspberry - Orange Coconut - Assorted

CIGARETTES . .	JIFFY MARKET SPECIAL	All Sizes Your Choice Crtn.	\$3.25
-----------------------	----------------------	-----------------------------	---------------

DURKEE	U. S. No. 1	VELVEETA	JIFFY	EASY MONDAY
MINCED ONIONS	MICHIGAN POTATOES	CHEESE	BAKING MIX	FABRIC SOFTNER
3 1/2-Oz. Box 39¢	10-Lb. Bag 49¢	2-Lb. Box 98¢	2-Lb., 8-Oz. Box 35¢	1-Gal. Jug 69¢

TIDE	King Size	99¢
	5-Lb., 4-Oz. Box	

BARBARA DEE	Easy Monday	BAYER	Easy Monday	CHICKEN O' SEA
Old Fashion COOKIES	Spray Starch	ASPIRIN	DETERGENT	TUNA
3 12-Oz. Bags \$1.00	1-Lb., 6-Oz. Can 29¢	100 Tablets 79¢	1/2 Gal 49¢	6 1/2-Oz. Can 29¢

PURINA DOG CHOW .	JIFFY MARKET SPECIAL	25-LB. BAG	\$2.99
--------------------------	----------------------	------------	---------------

MARATHON DISCOUNT GAS PUMPS

Finest Top Quality Gas at Low Discount Prices!

Thank You	MARATHON REGULAR GAS	33.9 gal. Includes All Taxes	KLEER - VIEW WINDSHIELD WASHER SOLVENT	59¢ gal.
	MARATHON PREMIUM GAS	37.9 gal. Includes All Taxes		

GAS PUMPS & STORE OPEN 7 a.m. to 10 p.m. 7 Days a Week

Ads
Taken
Till 5 p.m.
Tuesday

IT'S EASY TO
BUY-SELL-RENT-
HIRE & FIND WITH



Just
Call
GR 5-3581

WANT ADS

The Chelsea Standard

WANT AD RATES

PAID IN ADVANCE—All regular advertisements, 50 cents for 25 words or less, each insertion. Count each figure as a word. For more than 25 words add 2 cents per word for each insertion. "Blind" ads or box numbers add 50¢ extra per insertion. CHARGE RATES—Same as cash in advance, with 10¢ extra for each charge if not paid before 5 p.m. Tuesday preceding publication. Pay in advance, send cash or stamps and save 15¢. DISPLAY WANT ADS—Rate, \$1.10 per column inch, single column width only. 8-point and 14-point light type only. No borders or boldface type. Minimum 1 inch. CARS OF TEAKS or MEMORIALS—Single paragraph style, \$1.00 per insertion for 50 words or less; 2 cents per word beyond 50 words. COPY DEADLINE—5 p.m. Tuesday week of publication.

KNAPP SHOES

For Cushion Comfort
Robert Robbins
475-7282 48tf

FORMAL WEAR

RENTAL SERVICE
Proms - Weddings - Special Events
6 different colors.

Foster's Men's Wear

48tf

REAL ESTATE

4-ROOM Cedar Lake cottage. Excellent waterfront lot, \$16,000. Good terms.

R. D. Miller

REAL ESTATE

Real Estate Broker
475-7311
15775 Cavanaugh Lake Rd.
Chelsea, Mich. 37tf

Imported Tuberosus Begonia Bulbs

Now at
Chelsea Hardware
Start them now for early blooming. 41

Seamless Aluminum Gutters

White, brown, black or green.
WILSON METAL SHOP
428-8468, Manchester x24

Mr. Real Estate Broker

Would you like an inside track on the out-of-town and out-of-state markets? Could you use a growing weekly list of buyers? Does a complete and comprehensive advertising program appeal to you? If you want the edge over your competition—write today for information. Replies treated confidentially.

STROUT REALTY

P. O. Box 2757
Springfield, Mo. 65803 40

CANVAS CANOE WANTED. Ph. 475-8300, days. 39

WANT ADS

BOARDING, trimming, training. Town and Country Kennels. Jackson Rd. at Baker. NO 8-7200. 7tf

Gem Travel Trailers and Campers

PICK UP COVERS

4" \$100.00
26" \$179.00 and up

Triangle Sales

Chelsea 475-4302 40tf

CLOGGED SEWER

Reynolds Sewer Service

We Clean Sewers Without Digging
Drains Cleaned Electrically
FREE ESTIMATES
2-YEAR GUARANTEE
Phone Ann Arbor NO 2-5277
"Sewer Cleaning Is Our Business—Not a Side Line" 38tf

Buying Or Selling?

Property does sell in the winter time. If you (or a friend) are thinking of buying or selling, don't hesitate to give us a call, and we will be pleased to discuss your property with you.

Over 200 salesmen working for you through our multiple listing service.

Spear & Associates

REALTORS

1935 Pauline Plaza
Ann Arbor, Mich.
Bus. 769-5750
Res. 769-9880 x20tf

CAR & TRUCK LEASING. For details see Lyle Christwell at Palmer Motor Sales, GR 5-3271. 45tf

SPECIAL FURNITURE SALE

All furnishings in Weber

Construction Co.

Model House

at 13019 Old US-12

Fri. & Sat., Mar. 17-18

Save 1/3 to 1/2

Living Room & Bedroom Furniture, Lamps, Pictures and Decorative Accessories.

Merkel

Home Furnishings

Terms Available - Free Delivery 39

MRS. NIXON took her husband to China. Find out where a career in cosmetology will take you. For information contact Preston's Beauty Academy, 8745 Jackson Rd., Ann Arbor, 761-0625. x39

WANT ADS

ROBERT PATRICK for home improvement, building and maintenance. Ph. 475-7480. 45tf

HAMMOND ORGAN teachers wanted to teach in their own homes. Call Grinnell Brothers, Ann Arbor, 662-5687. 34tf

CALL FRANK for all your carpet cleaning jobs, morning or week-end. Needs only 8 hours to dry. Only 10¢ per square foot. Phone now for free estimate, 761-4328. All work guaranteed. 33tf

PIANO TUNING, Chelsea and area. Facilities for reconditioning and rebuilding. Used piano sales; reconditioned grands and verticals. E. Eklund. 426-4429. x50tf

Contractor Servicing Chelsea, Dexter and Manchester Areas

Complete Home Remodeling Inside and Outside

Specializing in extra living space, recreation rooms, kitchens and paneling. Installing all aluminum products, 5" eavestroughs, custom-made awnings, windows and doors, aluminum siding in many selected colors and styles.

Please Call

DALE COOK

Chelsea 475-8863 20tf

NOW

Full Time

Complete

Body Shop

Service

Stop in For An Estimate

PALMER FORD

222 S. Main St.
475-3271 27tf

FOR REAL DOLLAR SAVINGS be sure and see us before you buy any new or used car. Palmer Motor Sales, Inc. Your Ford Dealer for over 50 years. 2tf

G. G. HOPPER

Building Contractors

Phone GR 5-5581

Gregory 498-2148 40tf

A-1 USED CARS

'71 Maverick
'70 Galaxie 500 2-dr. hardtop
'69 Chev Impala
'68 Lincoln
'68 LTD Squire Wagon
'68 Olds 4-dr.
'67 Galaxie 500 2-dr. hardtop
'66 Fairlane Squire Wagon
'65 Plymouth 2-dr.
'62 Olds 4-dr.

TRUCKS

'70 Ford 1 ton
'69 Ford van
'69 Ford 3/4 ton
'69 Dodge 1/2 ton
'68 Ford 1/2 ton
'67 International 1/2 ton
'67 Chevrolet van

PALMER FORD

Open Mon., Wed., Thurs., Till 9:00
Chelsea GR 5-3271 x37tf

NOW OPEN

Ceramics

POTTS 'n' PAINTS

120 S. Main St.

Disque greenware
Gazeboes and stains
Jaclyn stains
Dri-wipe
Custom Firing

STORE HOURS:

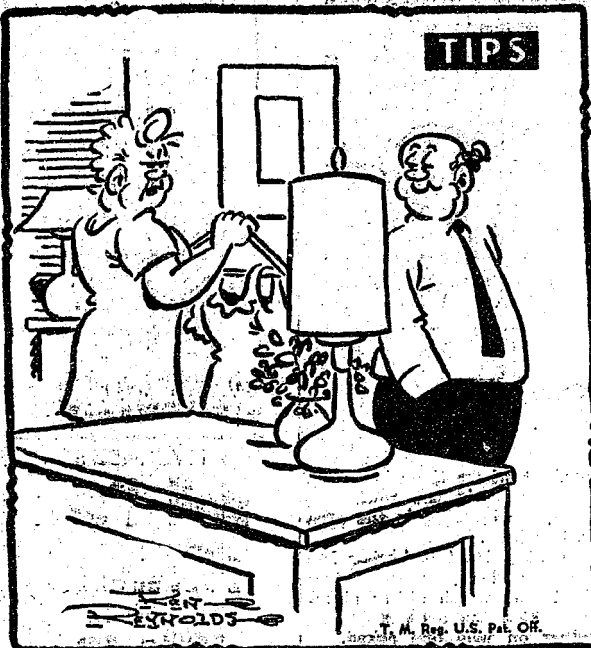
10:30-6:00 Monday-Saturday
Closed Sunday—
open only by appointment

CERAMIC CLASSES
Beginning week of March 19
Afternoons: Monday & Wednesday,
1:30-3:30

Evenings: Tuesday & Thursday,
7-9 p.m.
Children's Class:
Tuesday afternoon 4-6 39

FOR SALE — 12'x60' 3-bedroom trailer. May be seen on week-ends and after 5 during the week. Clear Lake Trailer Park, Lot 10. 40

FOR SALE — Sharp 1969 V-W beetle, 4-speed transmission, AM-FM radio. Price \$1,600. Phone 475-7761. 42



"The way that cleaner in the Standard Want Ads cleans clothes — I'll never get any new ones!"

WANT ADS

PATCHING and PLASTERING. Call 475-7489. 38tf

A fine selection of

New and Used Cars

for immediate delivery

Harper Pontiac Sales & Service

475-5311

Evenings, 761-2999 1tf

TRAVEL TRAILERS — 18-ft. and up; 10x55 ft. trailers. John R. Jones Trailer Sales, Gregory, Mich. Phone 498-2655. 43tf

REPAIR SERVICE for household refrigerators, freezers and garbage disposers. Call Bill, 426-8314. x12tf

CAR RENTAL by the day, week-end, week or month. Full insurance coverage, low rates. Call Lyle Christwell at Palmer Motor Sales, GR 5-3271. 25tf

Custom Kitchen Cabinets

and

Formica Tops

Made to Order

475-2857 82tf

Real Estate For Sale

LARGE COUNTRY HOME — 3 bedrooms, 3 baths, formal dining room, family room with fireplace, 2nd room ready for paint or paneling, 2 1/2-car garage. Price reduced to \$55,800.

8-BEDROOM BRICK—Overlooking Inverness golf course. North Lake access. 2 fireplaces, 2 ceramic baths, full basement, 2-car garage. Brand new.

CLARENCE WOOD

BROKER

Efficient PERSONAL Service

646 Flanders St., Chelsea
Phone 475-2033 34tf

SPRING SALAD LUNCHEON — March 22, Congregational church, 11-1 p.m. Men's dining room serving salads and hot dishes. Contact members for tickets, \$1.50 each. Bake sale in Fellowship Room. 39

FOR SALE — 4 gas space heaters. One 7.35x14 tire. Ph. 475-8809. x39

And Away You Go . . .

for miles of smooth motoring after you fill up with our PURE gas and oils.

One stop here keeps you going safely, surely. Try our speedy, friendly, competent service. You'll come back again and again!

UNION 76 OIL PRODUCTS

Jim's Union 76 Service

Tires — Batteries — Tune-Ups — Brake Service — Wheel Alignment

PHONE 475-2822 501 SOUTH MAIN

WANT ADS

GERT's a gay girl—ready for a whirl after cleaning carpets with Blue Lustre. Rent electric shampooer \$1. Dancer's. 44

Hearthside Yarn Shop

5450 Conway Road

Yarns, needles, accessories

Free instructions in knitting and crocheting with follow-up assistance.

Orders taken for hand-made items.

Ph. 475-2014 36tf

Headquarters for BALL BAND RUBBER FOOTWEAR

at Foster's Men's Store 18tf

1968 FORD F-250 Camper Special, custom cab, V-8 engine, auto trans., power brakes, west coast mirrors, auxiliary fuel tanks, \$1895. Devon Lincoln-Mercury, 2100 W. Stadium, Ann Arbor. Ph. 662-5555. 35tf

Low Low

Down Payment

On New

GOLD KEY

MORTGAGES

For information ask your Realtor or call 663-7555.

Ann Arbor Federal

Savings

x37tf

THORNTON

475-8629

COLONIAL—4 bedrooms, 2 baths,

full basement, two-car garage, blacktop drive. Excellent location. Priced at just \$28,800.

2 WOODED ACRES—Large room house only 5 years old. 4 bedrooms, den, family room, 2 fireplaces; Chelsea schools.

LAKEFRONT—Cavanaugh Lake, year around home; 3 bedrooms, good beach. Priced at \$26,500.

FARM HOME—10 acres, in heart of Waterloo Recreation Area; house needs modernization. Chelsea schools. Terms possible.

ACREAGE: 3, 5, 10, & 40 acre parcels.

THORNTON

Realtor - 475-8629

Eve—

John Pierson - 475-2064

Helen Lancaster - 475-1198

Robert Thornton - 475-8857 39

1967 PONTIAC Catalina 2-dr. V-8, auto., power steering, air cond., \$895. Devon Lincoln-Mercury, 2100 W. Stadium, Ann Arbor. Ph. 662-5555. 35tf

WANT ADS

SPIKE'S FLEA MARKET

ANTIQUES and COLLECTIBLES

Every Saturday and Sunday

11 a.m. to 7 p.m.

Auctions Every Saturday at 7 p.m.

Dealers and public invited.

4065 Page Ave.

Michigan Center, Michigan

(Page Ave. Exit, east 7/10 mile)

Phone (517) 764-0250 x13tf

Have You Seen WEBER'S

Latest Model in Chelsea?

OPEN SAT. & SUN. 1-5 P.M.

Carpeting

Range, Refrigerator, Dishwasher

Full basement

Well & Septic

Maintenance-free exterior

100 plans available

\$27,900

Excluding Lot

MODEL 475-1213

SALESMAN 668-1985

OFFICE 475-2828

BRIGHTON OFFICE 227-6410

Furnishings by Merkel of Chelsea

DIRECTIONS TO MODEL: Take

I-94 west to Fletcher Rd. exit,

turn right on Old US-12. Model

is on the left, just off I-94.

W. C. WEBER

CONST. CO.

"Chelsea's Premiere Builder" x39

ADMIRAL

See the new Admiral color television. No color adjusting necessary.

SERVICE ON ALL MAKES

TV - RADIO - STEREO

Antenna Sales and Installation.

PORTER'S TV

212 Buchanan St., Chelsea

Ph. 475-8380 46

All Insurance Needs

In the convenience of your own home — or mine

N. H. Miles, Allstate

Call GR 5-8334 after 6 p.m. 45tf

8th ANNUAL

Good Samaritan

Antique Fair and Sale

BIGGER and better than ever. New location in Twining Aviation Building, Ann Arbor Municipal Airport, Ellsworth and State Rd., Ann Arbor. Lots of free parking. 38 dealers (many from out of state). All types of antiques available for sale, also display of antique aircraft.

Fri.-Sat., March 17-18

Noon to 10 p.m.

Sunday, March 19

Noon to 6 p.m.

Tickets available at Dancer's Department Store or contact Mary Jo Miller, 475-7113.

Tickets: pre-sale, \$1.25;

\$1.50 at door. x39

2-CYCO FUEL

For All 2-Cycle Engines

WHITE GAS

Available at

Gateway Sports Centre, Inc. 45tf

ELECTROLUX

WANT ADS

WORK WANTED — Carpenter wants all remodeling work. Reasonable rates, satisfaction. Phone Gregory 498-2559. -41

FOR SALE — Inlaid vinyl and linoleum. Also tile, Armstrong and Congoleum Nairn. Installed by skilled craftsmen. Estimates, terms. Merkell Bros. 475-8821. 32tf

Chelsea Glass & Custom Woodworking

140 W. Middle
Chelsea, Mich.
475-2226 - 475-4311

x32tf

WANTED

TYPIST

Accurate, 55-60 wpm.

Apply in Person

Chelsea Standard

800 N. Main St. Ph. GR 5-3581

FOR SALE — Thoroughbred German Shepherd puppies. Phone 426-4905.

XEROX COPIES made. Merkell Brothers. 41tf

1968 CHEV NOVA 2-dr. 6-cyl. auto, \$1195. Devon Lincoln-Mercury, 2100 W. Stadium, Ann Arbor. Ph. 662-5555. 38tf

WANTED — 3-bedroom or more house to rent in Chelsea school district. Prefer country. 475-2098. 34tf

ALCOA SIDING SPECIALIST since 1936. Old sash, wood window replacement in aluminum. Aluminum combination and regular, in colors. Also gutters, shutters, sills and wood covered. Roofing. Service and workmanship guaranteed. William Davis (dial slowly, 663-6635). -x45

1969 PONTIAC Catalina 4-dr. hard-top, V-8, auto, power steering, power brakes, low mileage. One owner. \$1995. Devon Lincoln-Mercury, 2100 W. Stadium, Ann Arbor. Ph. 622-5555. 38tf

1000
personal
address
labels
\$1.50
Now Available at
The
Chelsea Standard

WANT ADS

REDUCE EXCESS FLUIDS with Fluidex \$1.69 — Lose weight safely with Dex-A-Diet, 98¢ at Chelsea Drug. -43

FOR SALE — Chihuahua puppies Ph. 475-2838. x39

FOR SALE — Counter flow gas furnace. 100,000 BTU. Phone 475-8739. -39

RIDE NEEDED — U of M employee needs ride to work. Lives on Old US-12 near expressway. 475-2559 43

SPRING SALAD LUNCHEON — March 22, Congregational church, 11-1 p.m. Men's dining room serving salads and hot dishes. Contact members for tickets, \$1.50 each. Bake sale in Fellowship Room. 39

FINE, HEALTHY PUPPIES free. From good hunting and disposition stock. Handsome markings. Call 475-2952 mornings or after 4 p.m. 39

AUTO PARTS — 3.91 Plymouth rear-end, complete with new brakes and drums, fits compacts only, \$80. Also 3.23 ring and pinion and driveshaft with universal for Plymouth's small rear axle. Reasonable. Phone 663-8228. x38tf

WORK WANTED — Tree cutting and trimming, fence row clearing and outside painting. Ph. 475-7109. x41

FOR SALE — 9' racing hydroplane with steering controls. Completely fiberglassed. Very durable. Must see to appreciate! \$80. Phone 663-8228. x38tf

REFRIGERATOR — Avocado, 16 cu. ft. 2 door. 11 mos. old. \$150. Ph. 475-7779. 39

FOR RENT — Partially furnished second-floor apartment. Heat furnished. Available to young married couple. 475-2018 after 5 p.m. 39

FOR SALE — Mahogany dining room suite, 42" drop leaf table, 6 chairs and 3 extra "12" leaves, all with pads, seats 10-12, and 49" buffet. All in good condition. Best offer takes. 475-8125. 40

FOR SALE — 1967 Chevrolet convertible. Metal slate blue, 283, 4-speed. \$850. Call 475-8075. 39

CAT FOUND — Beautiful yellow and white Angora found on doorstep March 4. Now has 4 kittens. 475-5591. 39

WANTED — Responsible party would like personal loan for purpose of buying home. Interested person or persons call this number for further information any time after 6 p.m. 475-8168. -42

LAND WANTED — Retired couple looking for five to ten acres of rolling land in Manchester or Chelsea area. Cash deal. Phone 475-2784. 40

1970 CHEV CAMARO 2-dr. hard-top, Red with black vinyl roof. Low mileage. \$2295. Devon Lincoln-Mercury, 2100 W. Stadium, Ann Arbor. Ph. 662-5555. 38tf

FOR SALE — A-C 3-bottom 16" snap coupler plow with new Oliver B. T. M. 7900 Clear Lake Rd. -x40

WANT ADS

ST. BERNARD PUPS, AKC registered. Champion blood line. \$75-\$150. Ph. 475-4906. x38

1971 MUSTANG Grande V-8, auto, power steering, AM radio, Light brown with dark brown vinyl roof. \$2895. Devon Lincoln-Mercury, 2100 W. Stadium, Ann Arbor. Ph. 662-5555. 38tf

ATTENTION HOUSEWIVES — Bored, broke, want to have fun? Let us help you. No selling involved. Weekly paycheck. 475-8739 or 498-2244. x39

1965 CHEVROLET station wagon, good condition. Must sell. Ph. 475-1212. x39

WANTED — Silver dollars, Indian head pennies, gold coins, large or small collections; jack knives, watches, watch chains, fobs; any amount. Top premium paid. Call 475-8279. x39

R & H TREE EXPERT — Trimming, cabling, nailing, take downs. Fully insured. Free estimates. 475-3541. -x2

FOR SALE — '65 Chevy convertible, 327, automatic; red with black top. A-1 condition. 475-2893. x39

LOCAL COUPLE want to rent 2-bedroom apartment or house. Semi-furnished. Rural or town. Call 475-8279. x39

DOCK — five 8'x10' sections, one 4'x10' section. Complete with galvanized stringers and posts. Lifetime portable pier. \$100. 475-8823. x40

TIMOTHY HAY and straw for sale. 50¢ per round bale, small quantity. Call 475-8334 after 6 p.m. 475-8279. x39

FOR SALE — Registered Morgan gelding, well broke English Western, \$975. Morgan stud service and young stock for sale. 662-8384. x39

1965 IMPALA convertible. Good transportation. Ph. 475-2921. x39

WANTED TO RENT — Room, apartment or cottage in quiet area. Call 475-2541. x39tf

THANK YOU

We would like to express our sincere appreciation to all of our many friends and neighbors for their kind expressions of sympathy and condolences during the loss of our mother and grandmother. A special thank you to the Rev. Damberg and the Rev. Vaughn and the Jenter Funeral Home.

The family of Eliza Flint.

THANK YOU

I would like to thank my friends for the flowers and gifts they sent during my illness. A very special thanks to Bob Walz.

Darrell Larson.

In moulting, only a few feathers are dropped each day by the birds. In this way, Nature keeps them ready to engage in flight at any time.

The Weather
Is Certain
To Improve!

Suddenly last week-end it was spring. It was a time for taking long walks, getting the car washed, or—to many a mother's sorrow—playing in all the new mud puddles the melting snow had left. It was a time to leave your heavy coat at home and just forget about hats and gloves.

Then came Sunday night and Monday. It wasn't quite winter, it was, well . . . another March in Michigan.

When the winds were calm enough that not just the bravest ventured outside, Monday was a photographer's or artist's delight—branches covered with ice, swinging gracefully, but perhaps dangerously downward. But it was an electrician's nightmare, as many of the beautiful but overloaded branches broke off and fell onto wires, and the strong winds in one case knocked over a power line.

It was a vacation day for some Beach school students who turned around and headed for home—without authorization, school officials emphasize—upon discovering as they arrived that all the lights were out. For those who remained in school it was just a semi-vacation, a unique first hour clustered together in the cafeteria rather than in class.

The electricity is back on; the power and telephone lines cleaned off. But the skies stay gray and the streets slick. And the weather remains, as usual for March in Michigan, frustratingly unpredictable.

THIS WORLD
OF OURS

A ton of recycled paper represents 17 trees left growing to help supply us with oxygen. Recycled glass represents undisturbed silicate deposits. Let's all become "recycling" conscious - for our own good and nature's.

District Court Proceedings

Week of March 7-10

Roscoe Hughey, Onsted, pled guilty to driving with expired commercial plates and paid \$6.

Donald Brosowski, Saline, pled guilty to driving without proof of insurance and paid \$6.

Fidel Flores, Saline, pled guilty to driving with expired plates and paid \$10.

Vickie Thiede, Belleville, pled guilty to careless driving and was sentenced to \$30 fine and costs or 10 days in jail.

Melvin Ambruster, Bridgewater, was sentenced to \$10 or 10 days for driving with obstructed vision and \$21 or 10 days for speeding.

Mary Stoll, Whitmore Lake, pled guilty to driving without an operator's license and was sentenced to \$21 or 10 days.

Charles Munger, Tecumseh, pled guilty to disregarding a traffic signal and was sentenced to \$21 or 10 days.

James R. Gunter, Ypsilanti, was sentenced to \$150 plus a year's probation, plus participation in the alcohol program, for driving under the influence.

John Ceriani, Saline, was sentenced to \$200 plus a year's probation plus the alcohol education services, for driving under the influence.

Michael Ralimano, Saline, pled guilty to speeding and was sentenced to \$21 or 10 days.

Chris Holzapfel, Brooklyn, pled guilty to illegal use of marijuana and will be sentenced April 10 in Chelsea.

Alonso Feltner, Ypsilanti, pled guilty to driving with a revoked license and was sentenced to \$50 fines plus five days on the Saline Police Department work program.

Robert Greenfield, Ypsilanti, was sentenced to \$150 plus 18 months' probation, plus participation in the alcohol series and continued use of antibiotic, for driving under the influence.

Thomas Johnston, Milan, was sentenced to \$150 or 30 days, plus participation in the alcohol program, for impaired driving.

Victor Graeb, Saline, pled guilty to dog at large and was fined \$16.

Marvin Gray, Saline, pled guilty to being drunk and disorderly and was sentenced to \$35 or 10 days.

Milford Graves, Clinton, pled guilty to driving with expired commercial plates and was fined \$10.

Richard Heath, Milan, pled guilty to violating the basic speed limit and was sentenced to \$21 or 10 days.

Richard Remily, Manchester, pled guilty to driving with expired plates and paid \$10.

Ernest E. Moore, Manchester, pled guilty to driving with expired plates and paid \$6.

Steven Knopper, Ann Arbor, pled guilty to driving with expired regular plates and paid \$6.

Douglas Van Schelle, Clinton, pled guilty to speeding and paid \$20.

Glenn Buckmaster, Gregory, pled guilty to driving with defective equipment and was fined \$6.

Harold Hockman, Brooklyn, pled guilty to driving with expired plates and was fined \$16.

Thomas Novenskey, Tecumseh, pled guilty to driving with expired plates and paid \$6.

Leonard Dennis, Brooklyn, pled guilty to driving with expired plates and paid \$6.

Charles Murphy, Manchester, pled guilty to driving with expired plates and was fined \$10.

Willard Hertler, Saline, pled guilty to drunk and disorderly and was fined \$35.

Steven Knickerbocker, Chelsea, pled guilty to furnishing intoxicants to a minor and will be sentenced April 12 in Chelsea.

Timothy Watson, of Berrien Springs, pled guilty to driving with defective equipment and paid \$6.

Walter Weber, Ann Arbor, pled guilty to impaired driving and will be sentenced April 14 in Dexter.

Lewis John Smith, Sr., pled guilty to violating probation and was sentenced to \$15 plus five days on the Saline Police Department work program or 15 days in jail.

Call Ed McIntosh 769-6170
Evenings 761-4860

McINTOSH
& COMPANY
REALTORS
Ann Arbor

Not that the present selection is small! Dozens of varieties of animals, statuettes, water and tea pitchers, wall hangings, mugs, cookie jars, decorated baking dishes, and even piggy banks, some of which are not pigs but elephants—about anything you can think of is either there or can be created by the Bergerys.

Just wandering through the shop as a lesson in ceramics, as pieces are displayed in all the various stages of creation. Some have just been taken from the mold; others are ready for the glaze or stain; others are colored and ready for customers to take home.

But for those who won't settle for just looking and want to try it themselves, Mrs. Bergery will be offering ceramics classes starting next week, Monday and Wednesday afternoons and Tuesday and Thursday evenings for adults, Tuesday afternoons for children.

(Continued from page one)

ing the contest into overtime. Dave Ryder immediately sunk one for Grosse Ile, giving them what was to be a short-lived lead, as Keith Martin came back with a pair of baskets for Rouge, tipping the last one in with just two seconds to go in the overtime. Martin led Rouge with 18 points, while Jim Reid tallied 25 for Grosse Ile.

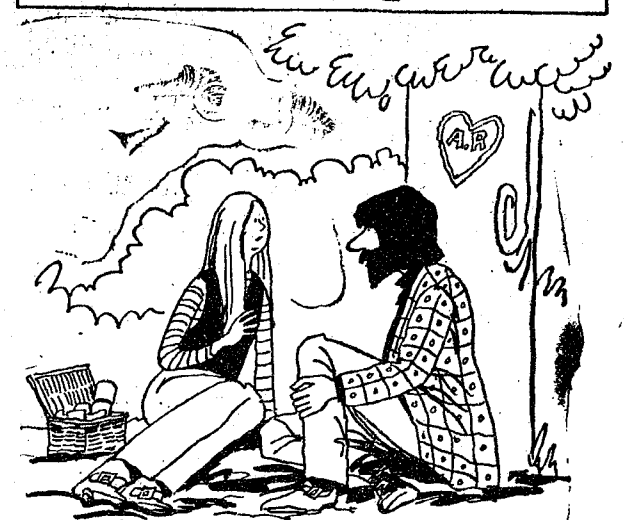
The Chelsea gym was packed throughout, with 2,100 spectators reported for last Tuesday's preliminary match between Pinckney and Saline and averaging 1,900 for the semi-finals and finals. Police Chief George Meranuck reports that about 14 volunteer members of the Auxiliary Police force were on duty at each game.

CHelsea
FINANCE CORP.
\$25 to \$1,000
For Any
Worthwhile Purpose

See or Call
FRANK HILL
at 475-8631

111 PARK STREET
CHELSEA, MICH.

Generation Gap U.S.A.



"That's sweet of you to carve my initials on the tree, but what about the ecology part of it."

TODAY'S THOUGHT

By LOUIS BURGHARDT

Read these quotes from a lengthy report submitted by the White House Conference on Children not too long ago . . .

" . . . A society that neglects its children and fears its youth can not care about its future. Surely this is the way to national disaster . . . There is a need to change our patterns of living so that once again we will bring adults back into the lives of children and children back into the lives of adults . . . The pursuit of affluence, the worship of material things, the willingness to accept technology as a substitute for human relationships . . . Society expects people to give first priority to their jobs and their civic and social obligations . . . children and families all too often come last . . ."

These are serious charges and all too often shamefully true. Will it ever be realized that the contaminating faults of society can ONLY be cleansed by people as individuals — and that it can not be done without renewed religious faith? . . . BURG-HARDT FUNERAL HOME, 214 East Middle St., Chelsea, Mich. Phone GR 5-4141.

—SPECIALS—

U. S. NO. 1 MICHIGAN

Potatoes . . . 10 lbs. 40c

ECKRICH

Roasted Sausage . . lb. 87c

ASSORTED FLAVORS

Jell-O . . . 3 pkgs. 29c

32-OZ. LARGE

Liquid Ivory Soap . . . 54c

GALA

Paper Towels, 2 roll pkg. 32c

KUSTERER'S

FOOD MARKET

DIAL 475-2721

WE DELIVER

CHELSEA

THREE BEDROOM

Has to be sold. One and one-half baths. Full basement. Garage. Completely remodeled. Assume 7% VA mortgage.

Call Ed McIntosh 769-6170
Evenings 761-4860

McINTOSH
& COMPANY
REALTORS
Ann Arbor

NOW!

FORD PINTO WAGON



FORD PINTO WAGON



FORD PINTO SQUIRE WAGON

PALMER FORD

CHELSEA

Since April 1912

PH. 475-3271

5 1/2%
Annual Rate
INTEREST
on
SAVINGS
CERTIFICATES OF DEPOSIT
2-year maturity in minimum
amounts of \$1,000.

ALSO: 5% per annum

3-month, automatically renewable,
CERTIFICATES OF DEPOSIT in mini-
mum amounts of \$500.

4 1/2% per annum

Regular Passbook Savings.

All Interest Paid Quarterly

CHELSEA STATE BANK

Member F.D.I.C.

Community
Calendar

Special meeting of Olive Chapter, No. 108, March 22, 8 p.m., honoring county officers; practice March 21, 7:30 p.m., at Masonic Temple.

Public card party sponsored by QBS at Masonic Hall, March 18, at 8 p.m.

Chelsea Camera Club, Tuesday, March 21, 7:30 p.m., Sylvan Town Hall. Program by Phil Collica of Ann Arbor; slide show on the Orient. Guests welcome.

Rogers Corners Extension Study Group, Tuesday, March 21, 7 p.m., home of Mrs. Norman Wenk. Note change in time.

Rummage sale, April 14-15, at Sylvan Town Hall, by Rebekah Lodge.

Senior Citizens, birthday party pot-luck, March 16, 6:30 p.m., Korner House. Fun Night, March 17, 7:30 p.m.

K. of C., March 19, 8 p.m., at the hall.

Career information, 7:30 p.m., March 16, Chelsea Medical Clinic; for dentistry, veterinary medicine, and pharmacy.

Lyndon Study Club, Thursday, March 16, 12:30 p.m. Lyndon Town Hall. Bring cookies and cupcakes for Easter gifts for the John-George home in Jackson.

Kindergarten previews: Parents of children who will be 5 by Dec. 1, 1972, call North school, 475-2577, or South school, 475-2913, to make appointment for children to visit a kindergarten class. Continues through March 30.

Chelsea Suburbanettes Study Club, Thursday, March 16, 7:30 p.m., home of Mrs. Earl Tison. Speaker: Contact Mrs. Melvin Leach by March 12.

Insomniacs: Sunday, March 20, 5 p.m., Lounge of St. Andrew's Episcopal church, North Division St., Ann Arbor. Speaker, cards and games. For information about the group call 971-5887 or 971-4756.

Spring Salad Luncheon, Congregational church, March 22, 11 a.m.-1 p.m., Men's dining room serving salads and hot dishes. Contact members for details, \$1.50 each. Bake sale in Fellowship Room. adv39

Ceramics classes at Potts n' Paints, 120 S. Main St. Beginning week of March 12. Monday and Wednesday, 1:30-3:30 p.m. or Tuesday and Thursday, 7:00-9:00 p.m. Children's classes Tuesday, 4 to 6 p.m. adv39

VFW Auxiliary, business meeting, March 20, 8 p.m., Rebekah Hall.

Mill Creek Research Council annual meeting, Tuesday, March 28, 8 p.m., Lima Township hall. Officers elected, report to membership.

Ann Arbor Singles club, St. Patrick's dance, Saturday, March 18, 9-12 p.m., 350 S. Fifth Ave., room B-6, Ann Arbor, live music by the Mellow Tones, plenty of get-acquainted mixers, refreshments included. For information call 663-6080.

Agricultural Entrepreneurs Farm Bureau, Thursday, March 16, 8:30 p.m., home of Mr. and Mrs. Keith Bradbury. Speaker: Charles Cameron on his trip to Russia. Bring cake, sandwiches, or Jell-O.

Men's Summer Golf League annual meeting, March 21, 7:30 p.m., Inverness Club House. Team captains, team members, and those wishing to be placed on a team, please attend.

Farm Bureau Women's sewing handwork and craft contest, Thursday, March 23. Entries due at County Farm Bureau office Wednesday, March 22.

Chelsea Co-operative Nursery now accepting applications for fall 1972 enrollments. Phone Shari Roberts, 475-7522 or 475-2904.

Pap tests are free for all area women, Tuesday mornings, at St. Joseph Mercy Hospital, Ann Arbor. Call American Cancer Society office, 668-8857, for appointment.

American Legion and Auxiliary hospital equipment available by contacting Don O'Dell at 475-8249.

Inquiries regarding the Chelsea blood bank may be directed to Harold Jones in the event that Mrs. Dudley Holmes is unavailable, or to Mrs. Pauline McKenna, American Red Cross in Ann Arbor, 971-5300.

Telephone Your Club News To GR 6-5581.

DEATHS

Mrs. Dahue A. Riker
Was One of Founders of
Chelsea Public Library

Mrs. Dahue A. (Ethel J.) Riker, 78, of 143 E. Middle St., died March 10 at St. Joseph Mercy Hospital, Ann Arbor, after a short illness.

She was born Aug. 30, 1893 in Pontiac, the daughter of Harry and Julia High Wood. She was graduated from Michigan State Normal (now Eastern Michigan University) at Ypsilanti in 1915. She taught school for a year in Pontiac before her marriage to Dahue A. Riker on Sept. 5, 1916.

Mr. and Mrs. Riker celebrated their 50th wedding anniversary in 1966. For the first 10 years of their marriage they lived on the fruit farm they own on Riker Rd., North Lake, before moving to their home on E. Middle St.

Mrs. Riker was a life member of Olive Chapter No. 108, Order of Eastern Star, and a member of the First Congregational church of Chelsea. She had taught in the church school for 25 years, and was a member of the Senior Citizens group of the church. She was also a member of the Oystermen and of the original Child Study Club, and with that group helped to found the first public library in Chelsea, now known as McKune Memorial Library.

Surviving are her husband; a daughter, Mrs. Frederick (Mary Jane) Leeman of Ann Arbor; two grandchildren, Frederick S. Leeman of Oklahoma City, Okla., and Mrs. Richard (Mary Louise) Bigg of Manchester; and three great-grandchildren. She was preceded in death by two sisters and by a daughter, Irene, who died in infancy.

Eastern Star memorial services were conducted by Olive Chapter No. 108 of Chelsea at 8 p.m. on Sunday, March 12, with funeral services being held at 2 p.m. on Monday, March 13 at the Burghardt Funeral Home. The Rev. Paul H. Gerhart was the officiating clergyman. Burial followed in Oak Grove Cemetery.

Memorial contributions may be made in Mrs. Riker's name to the Chelsea Community Hospital volunteers.

Irvin Aeschliman

Retired Ypsilanti Barber
Dies at Daughter's Home

Irvin Aeschliman, a retired Ypsilanti barber, aged 67, died Saturday, March 11 at the home of his daughter, Mrs. Richard Dean of 259 Harrison St. Aeschliman and his wife had made their home here since last November because of ill health. Their home in Ypsilanti was at 2404 McKinley St., where they had resided for 27 years. Aeschliman had operated the West-side Barber Shop in Ypsilanti for eight years before retiring in 1968. He was a member of the Memorial Christian church of Ann Arbor.

Born March 12, 1904, in Waukeon, O., Aeschliman was the son of Christian and Minnie Martin Aeschliman. He was married in January, 1942, to LaVerne Speaks, who survives. Also surviving is one daughter, Mrs. Richard M. (Lana) Dean, of the Harrison St. address; three grandchildren, Christopher, Paula Ann and David Dean, all of Chelsea; three brothers, Simon, Ezra, and Amos Aeschliman, all of Waukeon, O.; and one sister, Mrs. Anna Blair, also of Waukeon. He was preceded in death by another brother, Albert. Funeral services were held at 2 p.m. Tuesday, March 14, at the

IT'S HERE!
NEW
LIGHTWEIGHT
MIGHTY
MITE
REMINGTON
CHAIN SAW

EASY TO HANDLE, FUN TO USE
This 6½ pound Mighty Mite Remington Chain Saw is so versatile you'll use it for:
Felling trees up to 2 feet thick
Cutting firewood
Trimming, pruning, clearing
Camping, summer homes
Building outdoor furniture
This easy starting lightest-of-all Remington Chain Saws comes fully assembled and features semi-automatic oiling, quiet low-tone muffler, and cushioned hand grips. You'll like its light weight, easy handling, and low, low price. See it now. \$129.95

GAMBLES



SPRING ACHIEVEMENT PREPARATIONS:
Garfield Gang members Carrie Lane (left) and Kelli Borton receive advice from 4-H leader Mrs. Richard Borton on projects they are making for this year's 4-H spring achievement. Sewing, knitting, wood-working, leatherwork, and photography projects will

U-M Professor
Tells Kiwanians of
Work on Mummies

Speaker for the Kiwanis Club Monday evening was Dr. James Harris of the University of Michigan, whose specialty is mummies. Recently returned from Egypt, where he took X-rays of mummies, Dr. Harris showed slides and gave a run-down on the history of mummies.

Next Monday will be the Kiwanis Club's 48th birthday party, a ladies night. There will be guests from Jackson—the chapter which originally sponsored Chelsea's—and from Pinckney and Dexter—two chapters sponsored by Chelsea. Perfect attendance pins will be given out.

Tuesday night, March 14, four tended the divisional meeting in officers from the Chelsea club at Howell. In attendance were George Staffan, Charles Cox, Lou Burghardt, and Floyd Fowler.

More wives could lean to cook well if they weren't so busy preparing meals for the family.

Burghardt Funeral Home, with the Rev. Russell Fuller officiating. Burial followed in Oak Grove Cemetery. Those desiring to do so may make contributions in Mr. Aeschliman's memory to the Memorial Christian church of Ann Arbor.

Pre-Schoolers
Offered Preview
Of Kindergarten

Pre-schoolers hoping for a sneak preview of kindergarten will have their chance this month, according to the elementary school principals. They have scheduled visitation sessions from 8:30 to 9:45 a.m. and from 12:30 to 1:45 p.m. daily from now until March 30.

Parents with children who will be five by Dec. 1, 1972 and who wish to take advantage of the preview sessions are to call South school, 475-2913, or North school, 475-2577, to make arrangements for a specific day.

School administrators indicate that the sessions will be a preview of kindergarten in general and will not necessarily indicate which rooms or even which school the children will be assigned to in the fall.

RECOVERING FROM SURGERY
J. Erick Meyers, the son of Mr. and Mrs. Robert Meyers, 11497 Hadley Rd., is recovering well from heart surgery. He is at Mott's Children's Hospital in Ann Arbor, floor 5-East.

Before the white man came to the new world, the grape was the only one of the common fruits that had ever been seen or heard of in North America.

BIRTHS

A daughter, Joli Lin, March 8 to Mr. and Mrs. Patrick M. Milliken, 600 Taylor. Maternal grandparents are Mr. and Mrs. Chester Keizer of Chelsea. Paternal grandparents are Mr. and Mrs. George Bassham of Romulus and Mr. and Mrs. Donald Milliken of Ann Arbor.

There was a time when gals stayed home because "they had nothing to wear." Now they go to the beach.

Mrs. John Thornbury Elected
To Girl Scout Council Board

Mrs. John (Julia) Thornbury of Chelsea was elected last week to the board of directors of the Huron Valley Girl Scout Council. A former troop service director for Chelsea, Mrs. Thornbury has been a member of the Huron Valley Council's finance committee since 1971. Here in Chelsea, she has been active in the Methodist church, as a fifth grade Sunday school teacher and member of the administrative board. She has also worked full time as national director of Delta Delta Delta.

Mrs. Thornbury was elected along with other directors, officers, and delegates to the national council at the annual meeting of the Huron Valley Girl Scout Council, held Tuesday, March 14 in Ypsilanti.



MRS. JOHN THORNBURY

Carl Quigley Joins Navy

Carl Quigley, a 1971 graduate of Chelsea High school, joined the Navy March 9 and is now in basic training at the Naval Recruiting Training Command in San Diego, Calif. After graduating, Quigley worked at Weber's in Ann Arbor and at Rhe-tech, Inc., in Whitmore Lake. He is the son of Mr. and Mrs. William Quigley, 1808 Brown.

Auto Battery Stolen
From Used Car Lot

An automobile battery worth approximately \$5 was stolen from the Harper Sales car lot sometime during the night of Thursday, March 9-Friday, March 10.

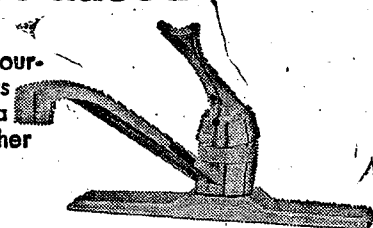
The theft, reported by Sumner Osterle of Harper Sales, was from a 1962 four-door Pontiac sedan. There are no suspects in the case.

Winter Recreation Program

MONDAY—
7:30-9:30 p.m.—Beginning golf at Beach school gymnasium.
8:00-10:00 p.m.—Ladies conditioning at Chelsea High school.
TUESDAY—
7:00-9:00 p.m.—Karate at North Elementary school.
6:30-8:30 p.m.—Men's basketball at Beach Junior High.
THURSDAY—
6:30-8:00 p.m.—Beginning tennis at Beach Junior High.
8:00-9:30 p.m.—Advanced tennis at Beach Junior High.
SATURDAY—
9:00-11:00 a.m.—Boy's basketball, 2nd through 6th grade, at Beach Junior High.
9:00-11:00 a.m.—Girls' gymnastics and games, at Chelsea High school.

If you've ever replaced an electrical fixture, you can install a Peerless Faucet.

If you're a do-it-yourselfer but always thought installing a faucet was in another league, forget it.



YOU CAN INSTALL
PEERLESS FAUCETS FAST AND EASY
WITH HOUSEHOLD TOOLS!

★ SINGLE-LEVER

The latest in kitchen faucets. (Also with spray). Replaces old 2-lever sets.

\$16⁸⁸
As Shown

★ DOUBLE-HANDLE

With swing spout—will fit on your present sink.

\$13⁸⁸

★ SINGLE-KNOB

Lavatory faucet with lucite knob.

\$15⁸⁸

★ SHOWER SET

With single-knob control, shower head and tub-spout.

\$16⁸⁸

ALL PEERLESS FAUCETS ARE
WASHERLESS AND CARRY A
5-YEAR NO-DRIIP WARRANTY!

AT HOMEOWNER HEADQUARTERS -

CHELSEA LUMBER

knit
...the big hit!



The Curlee knit blazer/sport coat gets top billing this spring. It's got style... note the new flap pockets and half belt back. It's got shape... in easy-fitting knit. And it's shaped to stay because knit doesn't wrinkle or bag. It's got color... you can choose yours in spring's newest solids and patterns. Yes... knit is the big hit... it's got everything!

VERY CURRENT
VERY
Curlee

\$55.00 to \$69.50

STRIETER'S
MEN'S WEAR
"The Place To Go for Brands You Know"



Model SD-22G-1, 22.4 cu. ft. including 8.2 cu. ft. (287 lbs.) freezer

Fashion colors are available in both models of the Amana 22 Refrigerator/Freezer (Model SD-22G-1, 22.3 cu. ft. including 8.2 cu. ft. (287 lbs.) freezer). They include two-tone Avocado; Copper-tone; Autumn Gold or White. And remember, both models are only 35½" wide.

Easy Terms

Amana tradition of fine craftsmanship makes it possible...

5 YEAR WARRANTY ON
PARTS AND RELATED LABOR

Amana warrants for 5 years from date of original purchase in U.S. replacement or repair of parts found defective as to workmanship or material under normal use. This includes labor required for replacement of defective parts. Defective parts are to be returned through Amana's dealer-distributor organization. Owner is responsible for serviceman's travel charges, local cartage, replacement of gaskets, rubber or plastic parts and light bulbs. Any product subjected to accident, misuse, negligence, abuse, detachment of serial plate or alteration shall void the warranty. In Canada, the warranty applies as above except that it does not cover taxes, duties, assessments levied at time of part export.

Decorate
with 329
decorator
fronts

Color co-ordinate the Amana with your kitchen. Or you can use the same wood as your cabinets in ¼ inch thickness with Amana's special Trim Kit. Choose your color, pattern, texture and design. Your kitchen will sparkle with an Amana Model SD-22G-1.

Refrigerate

Dial the temperature you want for foods you store. There's one control for the freezer, a separate one for the refrigerator. You can even control the humidity. And you get more usable storage space.

Freeze

You can dial even zero degree temperatures. The Amana 22 has a capacity of 8.2 cubic feet, holds 287 pounds. It's also designed so you can install an Automatic Ice Maker. Easily.

Amana... the usable refrigerator

HEYDLAUFFF'S

113 North Main, Chelsea

Phone 475-1221



CHELSEA
1101 M-52

OPEN SUNDAYS

See Our 8-Page Mailer You
Received at Home for All Our
Special Savings for Chelsea Area Shoppers

CLIP & SAVE
SAVE 26c WITH COUPON
BORDEN'S JUMBO TREAT
ICE CREAM
GALLON **99c**
LIMIT 1 Expires March 18, 1972

CLIP & SAVE
SAVE 13c WITH COUPON
GENERAL MILLS
WHEATIES
12-Oz. Box **26c**
LIMIT 1 Expires March 18, 1972

POLLY'S HAMBURG OR HOT DOG
BUNS 8-Ct. Pkg. **22c**

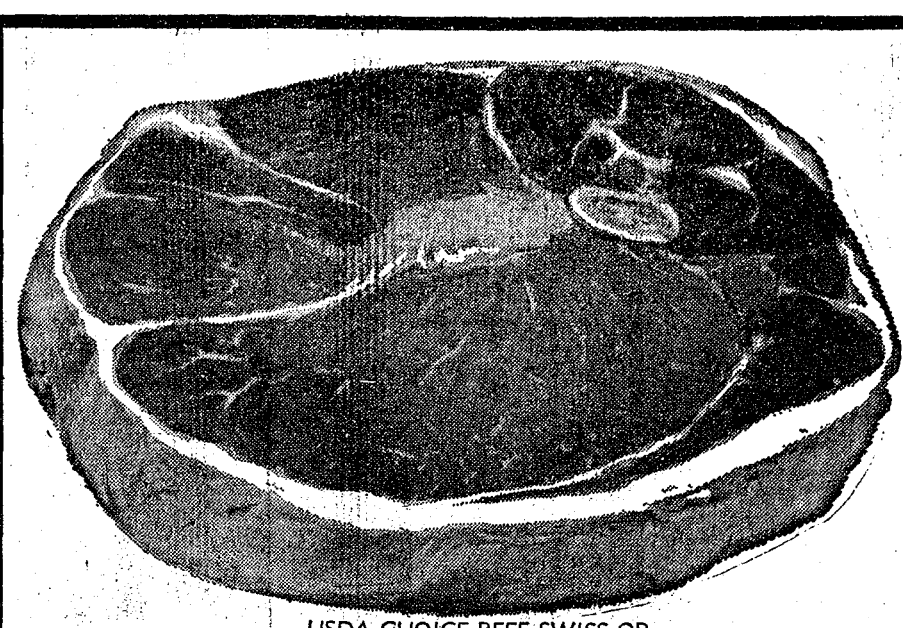
CLIP & SAVE
SAVE 17c WITH COUPON
NABISCO PREMIUM
CRACKERS
1-Lb. Box **25c**
LIMIT 1 Expires March 18, 1972

CLIP & SAVE
SAVE 50c WITH COUPON
MAXWELL HOUSE
COFFEE
2-Lb. Can **99c**
LIMIT 1 Expires March 18, 1972

SEALTEST 2% VITALURE
MILK
Gal. **79c**
1/2-GAL. CRTN. SEALTEST
BUTTERMILK . . 2 for 75c
1/2-PINT SEALTEST
SOUR CREAM . . . 22c
1-LB. PKG. KEYKO
MARGARINE . . . 25c
8-Oz. Tube Pillsbury Buttermilk or Country Style
BISCUITS . . . 9c
4 1/4-OZ. MADE RITE
CHEESE CORNS . . 25c

CAN "SWEET" FLAVORS
FAYGO POP . . . 10c
12-OZ. JOHNSON'S
FAVOR WAX . . . 99c
1/2 GAL. STA PUF
FABRIC SOFTENER . . 59c
24-OZ. KRAFT TWIN PAK AMERICAN
CHEESE SLICES . . \$1.19
1/2-GAL. KRAFT
ORANGE JUICE . . . 79c
5-LB. PKG. GOOD VALUE FROZEN
FRENCH FRIES . . . 79c
16-OZ. PKG. FROZEN CHICKEN,
TURKEY OR SALISBURY STEAK
BANQUET DINNERS . . 39c
35-OZ. MUSSELMAN'S
APPLE SAUCE . . . 35c
14-OZ. HUNT'S
CATSUP . . . 21c
4 Pak Thank You Chocolate or Vanilla
SNACK PUDDINGS . . 43c

BANANAS
GOLDEN RIPE
12c
Lb.



USDA CHOICE BEEF SWISS OR

ROUND STEAK
Save 50c Lb. **\$1.09**

USDA CHOICE BEEF BONELESS ROLLED RUMP
ROAST Lb. **\$1.19**
HYGRADE BRISKET POINT CUT
CORN BEEF . . . Lb. **89c**
LEAN, TENDER
PORK STEAK Lb. **69c**

SAVE 12c RED HAWAIIAN
PUNCH 46-Oz. Can **25c**
SAVE 36c ELF SLICED YELLOW CLING
PEACHES 29-Oz. Cans **\$1.40**
SAVE 20 — DEL MONICO THIN
SPAGHETTI 2-Lb. Pkg. **29c**
SAVE 30c
NO CAL POP . . . 16-Oz. Cans **69c**
GOOD VALUE PEANUT
BUTTER 2 1/2-Lb. Jar **\$1.09**
WAGNER FRUIT
DRINKS 54-Oz. Bottle **39c**
SMUCKER RED RASPBERRY
PRESERVES 18-Oz. Jar **59c**

16-OZ. MUELLER'S LONG
SPAGHETTI **22c**
10-OZ. JOHNSON
SPRAY JUBILEE **88c**
24-OZ. DINTY MOORE
BEEF STEW **59c**
16-OZ. WISHBONE
ITALIAN DRESSING **55c**
MIRACLE
6-STICK MARGARINE . . . 3 1-Lb. Pkgs. **\$1.65**
16-OZ. CAN MINUTE MAID
ORANGE JUICE **65c**
16-OZ. KRAFT
CHEEZ WHIZ **85c**
16-OZ. NESTLE'S
QUICK **39c**
22-OZ. NIAGARA
SPRAY STARCH **53c**
2-LB. PKG. PILLSBURY HUNGRY JACK
PANCAKE MIX **48c**



IT'S A DEMON—a Dodge Demon, that is, and it can speed up to 115 mph in 11.9 seconds in a quarter of a mile. The car is owned and operated by John Martin of Wayne (pictured above), who demonstrated it to the Palmer Ford Drag Club at their March meeting. A full slate of spring and summer activities is planned by the club, including rallies, trips, and contests.

**Palmer Ford Drag Club
Plans Busy Spring Calendar**

It's been a quiet winter for the Palmer Ford Drag Club, but officers are hustling with a variety of plans for spring and summer.

In the club's March meeting, John Martin of Wayne brought his "Dodge Demon," which will speed up to 115 miles per hour in 11.9 seconds in a quarter of a mile. The April meeting will bring John Vermeersch, Ford Motor Sports Association (FMSA) Hot Line expert, to Chelsea, and in April the club will have its first road rally of the year.

Also in the planning stages are a caravan to Marion County International Raceway in Ohio for a day of the drag, a caravan to Detroit for the Street Rod nationals, and the FMSA Rally Day, Safety Day, and Ecology Day.

In addition, Palmer club members will serve as drivers for another club's rally for the blind, with directions all in braille. And in the planning stages is a giant extravaganza at Milan, co-sponsored by Palmer Ford Drag Club and Spitzler Demmer Ford Drag Club and including at least six other area car clubs, with prizes and trophies galore.

**Jaycees Seek
Books for
Prison Library**

The Jackson Southern Michigan Prison Jaycees are asking for outside help to assure the success of a project they are running. In an effort to give the Southern Michigan prison inmates something to do with their time, the Jaycees are establishing a library.

They are asking community members to donate books, preferably paper backs, since they have a limited space and want to obtain as many books as possible. So far, they report that community response has been encouraging, as there have been 100 books received to date.

"A book that you and I might read once and place on a shelf will be in constant use in the library," the Jaycees have said. "Don't worry if the book is appropriate or not," they add. "The prison officials will sort out the ones that are not, and they will be sent to homes and other places where they would fit. All the books will be used in some way."

Books may be dropped off at Dancer's, or contributors may call Barb Updegraff, 475-7481, chairman, or Sandy Brown, 475-7634, local Jaycee Auxiliary president, for pick up of books.

The first bunch of bananas ever seen in Britain was grown in Bermuda in 1044.

Earlier that evening, Vasely's brother, Eugene, had driven with Vertin from Hell to Portage Lake to help Vertin start his car. Eugene Vasely reported that when he was out of his car, Vertin suddenly leaped into the driver's seat and sped off. Vasely contacted Washtenaw County Sheriff's Lieutenant Thomas F. Spiess, who drove him to the house in Hell where he and his brother, Donald, lived together. Entering the house, they discovered Donald Vasely lying in a pool of blood, dead from the shotgun wounds.

The Livingston County Sheriff's Department was notified and a search launched for Vertin. Within an hour, he was apprehended by the Chelsea officers.

Thank You...

Thanks to you, our fellow citizens, who came out to cast your ballot in support of the Independent candidates for election to Village office. Your vote of confidence in Independent candidates is very much appreciated.

Independent Party



BOWLING NEWS

Rolling Pin League

Standings as of March 14

	W	L
Moppper Uppers	58 1/2	43 1/2
Grinders	58	46
Egg Beaters	55	47
Kookie Kutters	50 1/2	51 1/2
Mixers	50 1/2	51 1/2
Spooners	58	54
Coffee Cups	54	58
Pots	52 1/2	59 1/2
Dish Rags	47	65
Kitchen Kapers	47	65
Brooms	47	65
Jolly Mops	46	66

400 and over series: J. Edick, 457; B. March, 414; E. Edwards, 404; R. Bable, 410; S. Parker, 440; K. Del Prete, 408; J. Shepherd, 407; J. Rabbitt, 461; E. Reynolds, 412; A. Schneider, 421; H. Giffin, 400; D. Butler, 421; H. Dvorak, 444; L. Keezer, 404; D. Keezer, 466; J. Lewis, 426; G. Blaess, 444; Polly Patterson, 407; D. Kinsey, 424; Pat Patterson, 400.

140 and over games: J. Edick, 198, 145, 144; B. March, 147, 153; N. Hill, 152, 141; E. Edwards, 182; R. Bable, 173; G. Greenleaf, 171; P. Borden, 154; S. Parker, 203; K. Del Prete, 158; J. Shepherd, 161; J. Rabbitt, 194, 150; E. Reynolds, 146, 141; A. Schneider, 168; E. Giffin, 146; D. Butler, 153, 143; P. Harook, 159, 141; H. Dvorak, 174; L. Keezer, 175; D. Keezer, 176, 155; J. Lewis, 158, 141; G. Blaess, 152, 154; R. Cook, 142; Polly Patterson, 147, 141; Pat Patterson, 142; D. Kinsey, 147, 150.

Tri-City Mixed League

Standings as of March 10

	W	L
Four Mobil	64	40
3-D Sales & Service	60 1/2	43 1/2
Jiffy Mixes	57 1/2	46 1/2
Chelsea Cleaners	56 1/2	47 1/2
Trail Blazers	54 1/2	49 1/2
Jiffy Market	50	54
Smith's Service	48	56
Sprague Buick & Olds	46	58
4-W's	46	58
Stivers	42	62
Heydlauff's Appl.	38 1/2	65 1/2

500 series, men: C. Miller, 500; D. Scott, 530; C. Staphis, 529.
450 series, women: D. Fouty, 457; D. Fouty, 480; B. Parish, 471; M. Weston, 453.
150 games, women: M. Ashmore, 154; K. Rarksdale, 171; G. Dettling, 170, 150; E. Dettling, 161; D. Fouty, 154, 155; D. Fouty, 164, 157; B. Kunselman, 157; B. Parish, 153, 158, 160; C. Stoffer, 153; D. Watkins, 118; M. Weston, 174.

Junior Swingers

Standings as of March 11

	W	L
Rods	73	23
B. C.'s	59 1/2	34 1/2
Pin Pushers	53	43
"74" Swingers	52	44
Strikers	44	52
Champions	37	59
B. B. A.	36 1/2	54
Saturday Strikers	23	61

Games over 130: J. Collins, 158, 135; S. Bowen, 145, 131; B. McGuire, 141; M. Fahnner, 155; S. Schulze, 133; W. Bailey, 130; D. Eisele, 132; K. Harris, 139; D. Beaumont, 133, 135; J. Toon, 134; S. Lyerla, 148, 142; D. Messner, 177, 139, 176; D. Albar, 134, 137, 179; K. Sannes, 136; T. Abdon, 136.

Series over 350: J. Collins, 392; S. Bowen, 381; B. McGuire, 385; M. Fahnner, 372; S. Schulze, 360; T. Abdon, 367; D. Eisele, 359; D. Beaumont, 384; J. Toon, 381; S. Lyerla, 401; D. Messner, 491; D. Albar, 450.

17 sites require a waiting period before marriage licenses can be issued.

Senior House League

Standings as of March 13

	W	L
Chelsea Grinding	59 1/2	38 1/2
Chelsea Cleaners	58	40
Sam's Barber Shop	55	42 1/2
Spaulding Chevrolet	60 1/2	47 1/2
Bogar Builders	60	48
Pub Bar	55	53
Sylvan Center	54 1/2	55 1/2
Dana No. 1	50	58
Schneider's Grocery	45	63
Murphy's Barber Shop	44	64
Dana No. 1	41	67
Seitz's Tavern	35	73

600 series: A. Fletcher, 603; M. Kern, 619; R. Bauer, 640.
500 series: J. Collins, 610; M. Poertner, 625; N. Fahnner, 616; G. Lawrence, 623; T. McClear, 636; R. Spaulding, 652; D. Coppemoll, 623; K. Norris, 614; W. Cruse, 628; G. West, 600; W. Griffith, 600; J. Wilson, 607; D. Murphy, 681; J. Abdon, 614; N. Ernst, 662; E. Harook, 638; T. Steele, 616; N. Packard, 633; J. Myning, 646.

200 games: A. Fletcher, 219; T. Steele, 203; M. Kern, 246; N. Ernst, 202; D. Murphy, 224, 201; J. Abdon, 202; D. Coppemoll, 203; K. Norris, 200; T. McClear, 234; N. Fahnner, 219; R. Bauer, 253, 206.
Joren Keezer converted the 7-10 split.

Old Timers Bowling League

Standings as of March 10

	W	L
Sportsman's Tavern	58 1/2	39 1/2
Team No. 14	56	41
Milan Sewer Products	51	46
Bob & Otto Standard	48	49
Hias Beens	58 1/2	49 1/2
Sanford Security	57	51
Colonial Lanes	57	51
Team No. 14	56	52
Markel Furniture	54	54
Cloverleaf Lanes	53 1/2	54 1/2
Stein & Goetz	50 1/2	57 1/2
Nelson Realtors	47 1/2	60
Holzel Service	46	62
Dexter Bowl & Bar	45	63
Elms & Son	44	64
Hartman Ins.	43 1/2	64 1/2

High team game and series: Milan Sewer Products, 878, 2,483.
High ind. game and series: G. Lawrence, 202, 223, 602.
Other 200 games and 500 series and over: C. Bissell, 201, 202, 584; C. Burmeister, 207, 553; C. Peters, 209; W. Henry, 200; S. Matthews, 204, 519; D. Morton, 534; G. Rhoads, 523; C. Adams, 516; L. Brousalis, 507; A. Marry, 507; E. Clark, 507; H. Vick, 501.

Team No. 14 won three games.

Chelsea Lanes Mixed

Standings as of March 10

	W	L
A. A. Centless	112	63
Morgan & Turner	95	80
Heim & Arrington	94	81
Chelsea Lanes	90	85
Fitzsimmons Excavating	90	85
Barkley & Gephart	87	88
The Pub	87	88
Meabon's	83	92
Bollinger Sanitation	79	96
Jarvis & Goltz	69	106
Sabbe's Collision	68	107

Games postponed.
Women, 150 games: H. Morgan, 192; B. Smith, 170, 161, 160; E. Packard, 185, 160; T. L. Gilmore, 164; D. Keezer, 163; E. Gephart, 161; L. Alexander, 160; A. Turner, 189; K. Gephart 155; K. Arrington, 155.

Men, 475 series: B. Smith, 481; E. Packard, 457.
Men, 175 games: G. Doyle, 200; J. Turner, 193; R. Bauer, 191; M. Packard, 190, 182, 177; G. Arrington, 188; A. Keezer, 187; F. Bank, 186, 179; L. Keezer, 185, 178; J. Collins, 184; A. Sannes, 181.

Men, 475 series: M. Packard, 549; R. Bauer, 510; L. Keezer, 505; F. Bank, 500; G. Doyle, 498; A. Sannes, 406; J. Collins, 406.

Chelsea Nite Owl League

Standings as of March 13

	W	L
Steele's Heating	58 1/2	39 1/2
Gambles	55	43
Foster's Men's Wear	54	44
Oavanaugh Lake Store	52	46
Pump & Pantry	50 1/2	47 1/2
Smith's AAA	57	51
Chelsea Finance	52	56
Heiler Electric	52	56
Arco Sparks	43	65
Ted's Standard	42	66
McCalla Mobile Foods	42	66
Jack & Sons Barbers	39	69

500 series: G. Riettmiller, 538; J. Eder, 533; G. Miller, 527; R. Green, 518; E. Foster, 512; R. Woods, 511; D. Baku, 510; H. McCalla, 507; T. Steele, 507; C. Rentschler, 505; A. Peterson, 503; R. Smith, 500; R. Nix, 500; T. Stepp, 500.
200 games: J. Eder, 201.

Chelsea Suburban

Standings as of March 8

	W	L
Dairy Queen Brazier	74 1/2	30 1/2
Patty Ann Shoppe	70	38
Dana	65	43
Floor Mobil	59	49
Chelsea Lanes	56 1/2	51 1/2
Frisinger Realty	55 1/2	52 1/2
Pittsfield Plastics	55 1/2	52 1/2
Stake Farm	46 1/2	61 1/2
Artex Roll-ons	44 1/2	63 1/2
Dancer's	44	64
Chelsea State Bank	40	68
Waterloo Garage	37	71

150 games and over: N. Packard, 160; J. Baku, 158; N. Collins, 138, 135; R. Devine, 159; B. Hadley, 135; R. West, 152, 136; R. McGibney, 158, 164, 179; B. Abdon, 134; D. DellaTorre, 131; G. Wilkerson, 154, 151; R. Riettmiller, 166; E. Beck, 155; M. Breza, 153; K. Snyder, 154; S. Steele, 156, 162; P. Harook, 152; D. Kinsey, 150, 177; K. Chapman, 153; G. DeSmith, 158; G. Baczynski, 160, 163; B. Smith, 155, 181; P. Walk, 153; E. Yocum, 155; A. Wood, 156; A. Hocking, 159; J. Proctor, 162; S. Bowen, 155.
425 series and over: N. Collins, 496; B. Hadley, 470; R. West, 461; R. McGibney, 501; G. Wilkerson, 445; S. Steele, 449; D. Kinsey, 461; K. Chapman, 448; G. Baczynski, 463; B. Smith, 474; N. Miller, 427; A. Hocking, 461.

Chelsea Women's Bowling Club

Standings as of March 6

	W	L
Parish's Cleaners	80	28
Chelsea Milling	68 1/2	39 1/2
Jiffy Mixes	66	42
Chelsea Lanes	63 1/2	44 1/2
Washstewen Engr. Co.	63	45
Wolverine Bar	58	50
Jiffy Market	57	51
Community Serv. Press	45	63
Commun's	40	68
Schneider's Grocery	40	68
Norris Electric	40	68
N. American Rockwell	27	81

450 series and over: R. Hummel, 514; P. Poertner, 489; M. Kozminski, 483; D. Albar, 477; G. Kuhl, 476; D. Eisele, 470; P. Shoenmaker, 469; A. Knickerbocker, 466; A. Boham, 459; L. Orlovski, 455.
150 games and over: R. Hummel, 176, 171, 167; P. Poertner, 179, 164; M. Kozminski, 183, 158; D. Albar, 181, 175; G. Kuhl, 179, 156; M. Eisele, 186, 165; P. Shoenmaker, 184; A. Knickerbocker, 155, 166; A. Boham, 164, 179; L. Orlovski, 173; L. Alexander, 155; H. Morgan, 168; M. D. Sutter, 167; A. Turner, 160; P. Wunster, 162; D. Eiseleman, 154; B. Larson, 163; L. Bradbury, 165; B. Fritz, 155; A. Fahnner, 163; J. Rowe, 151; H. Ringe, 150; R. Lutovsky, 154; B. Parish, 165; J. Norris, 162, 152; J. Montgomery, 178; B. Weeks, 163.

450 series and over: R. Hummel, 176, 171, 167; P. Poertner, 179, 164; M. Kozminski, 183, 158; D. Albar, 181, 175; G. Kuhl, 179, 156; M. Eisele, 186, 165; P. Shoenmaker, 184; A. Knickerbocker, 155, 166; A. Boham, 164, 179; L. Orlovski, 173; L. Alexander, 155; H. Morgan, 168; M. D. Sutter, 167; A. Turner, 160; P. Wunster, 162; D. Eiseleman, 154; B. Larson, 163; L. Bradbury, 165; B. Fritz, 155; A. Fahnner, 163; J. Rowe, 151; H. Ringe, 150; R. Lutovsky, 154; B. Parish, 165; J. Norris, 162, 152; J. Montgomery, 178; B. Weeks, 163.

450 series and over: R. Hummel, 176, 171, 167; P. Poertner, 179, 164; M. Kozminski, 183, 158; D. Albar, 181, 175; G. Kuhl, 179, 156; M. Eisele, 186, 165; P. Shoenmaker, 184; A. Knickerbocker, 155, 166; A. Boham, 164, 179; L. Orlovski, 173; L. Alexander, 155; H. Morgan, 168; M. D. Sutter, 167; A. Turner, 160; P. Wunster, 162; D. Eiseleman, 154; B. Larson, 163; L. Bradbury, 165; B. Fritz, 155; A. Fahnner, 163; J. Rowe, 151; H. Ringe, 150; R. Lutovsky, 154; B. Parish, 165; J. Norris, 162, 152; J. Montgomery, 178; B. Weeks, 163.

450 series and over: R. Hummel, 176, 171, 167; P. Poertner, 179, 164; M. Kozminski, 183, 158; D. Albar, 181, 175; G. Kuhl, 179, 156; M. Eisele, 186, 165; P. Shoenmaker, 184; A. Knickerbocker, 155, 166; A. Boham, 164, 179; L. Orlovski, 173; L. Alexander, 155; H. Morgan, 168; M. D. Sutter, 167; A. Turner, 160; P. Wunster, 162; D. Eiseleman, 154; B. Larson, 163; L. Bradbury, 165; B. Fritz, 155; A. Fahnner, 163; J. Rowe, 151; H. Ringe, 150; R. Lutovsky, 154; B. Parish, 165; J. Norris, 162, 152; J. Montgomery, 178; B. Weeks, 163.

450 series and over: R. Hummel, 176, 171, 167; P. Poertner, 179, 164; M. Kozminski, 183, 158; D. Albar, 181, 175; G. Kuhl, 179, 156; M. Eisele, 186, 165; P. Shoenmaker, 184; A. Knickerbocker, 155, 166; A. Boham, 164, 179; L. Orlovski, 173; L. Alexander, 155; H. Morgan, 168; M. D. Sutter, 167; A. Turner, 160; P. Wunster, 162; D. Eiseleman, 154; B. Larson, 163; L. Bradbury, 165; B. Fritz, 155; A. Fahnner, 163; J. Rowe, 151; H. Ringe, 150; R. Lutovsky, 154; B. Parish, 165; J. Norris, 162, 152; J. Montgomery, 178; B. Weeks, 163.

450 series and over: R. Hummel, 176, 171, 167; P. Poertner, 179, 164; M. Kozminski, 183, 158; D. Albar, 181, 175; G. Kuhl, 179, 156; M. Eisele, 186, 165; P. Shoenmaker, 184; A. Knickerbocker, 155, 166; A. Boham, 164, 179; L. Orlovski, 173; L. Alexander, 155; H. Morgan, 168; M. D. Sutter, 167; A. Turner, 160; P. Wunster, 162; D. Eiseleman, 154; B. Larson, 163; L. Bradbury, 165; B. Fritz, 155; A. Fahnner, 163; J. Rowe, 151; H. Ringe, 150; R. Lutovsky, 154; B. Parish, 165; J. Norris, 162, 152; J. Montgomery, 178; B. Weeks, 163.

450 series and over: R. Hummel, 176, 171, 167; P. Poertner, 179, 164; M. Kozminski, 183, 158; D. Albar, 181, 175; G. Kuhl, 179, 156; M. Eisele, 186, 165; P. Shoenmaker, 184; A. Knickerbocker, 155, 166; A. Boham, 164, 179; L. Orlovski, 173; L. Alexander, 155; H. Morgan, 168; M. D. Sutter, 167; A. Turner, 160; P. Wunster, 162; D. Eiseleman, 154; B. Larson, 163; L. Bradbury, 165; B. Fritz, 155; A. Fahnner, 163; J. Rowe, 151; H. Ringe, 150; R. Lutovsky, 154; B. Parish, 165; J. Norris, 162, 152; J. Montgomery, 178; B. Weeks, 163.

450 series and over: R. Hummel, 176, 171, 167; P. Poertner, 179, 164; M. Kozminski, 183, 158; D. Albar, 181, 175; G. Kuhl, 179, 156; M. Eisele, 186, 165; P. Shoenmaker, 184; A. Knickerbocker, 155, 166; A. Boham, 164, 179; L. Orlovski, 173; L. Alexander, 155; H. Morgan, 168; M. D. Sutter, 167; A. Turner, 160; P. Wunster, 162; D. Eiseleman, 154; B. Larson, 163; L. Bradbury, 165; B. Fritz, 155; A. Fahnner, 163; J. Rowe, 151; H. Ringe, 150; R. Lutovsky, 154; B. Parish, 165; J. Norris, 162, 152; J. Montgomery, 178; B. Weeks, 163.

450 series and over: R. Hummel, 176, 171, 167; P. Poertner, 179, 164; M. Kozminski, 183, 158; D. Albar, 181, 175; G. Kuhl, 179, 156; M. Eisele, 186, 165; P. Shoenmaker, 184; A. Knickerbocker, 155, 166; A. Boham, 164, 179; L. Orlovski, 173; L. Alexander, 155; H. Morgan, 168; M. D. Sutter, 167; A. Turner, 160; P. Wunster, 162; D. Eiseleman, 154; B. Larson, 163; L. Bradbury, 165; B. Fritz, 155; A. Fahnner, 163; J. Rowe, 151; H. Ringe, 150; R. Lutovsky, 154; B. Parish, 165; J. Norris, 162, 152; J. Montgomery, 178; B. Weeks, 163.



SPORTS CORNER



KATHY WHITWORTH
ALL TIME LEADING MONEY WINNER IN THE LADIES PROFESSIONAL GOLF ASSOCIATION
WAS 1971 GOLFER OF THE YEAR AND TOP LPGA MONEY WINNER WITH \$41,181

SHE WON 4 TOURNAMENTS, TOOK THE VARE TROPHY RACE WITH 72.88 SCORING AVERAGE IN 20 EVENTS.

86, 94; R. Klink, 93; J. Stock, 92, 107; J. Dunn, 115, 116; D. Albar, 104, 113; M. Foster, 99, 99; D. Bowen, 94, 78; J. Krichbaum, 76, 120; C. Umstead, 71; B. Ostrander, 120, 100; J. Boyer, 101, 92; C. Kalishet, 88; B. Freeman, 88; G. Egeler, 80; D. McGill, 115, 84; D. K. Snyder, 154; S. Steele, 156, 162; P. Harook, 152; D. Kinsey, 150, 177; K. Chapman, 153; G. DeSmith, 158; G. Baczynski, 160, 163; B. Smith, 155, 181; P. Walk, 153; E. Yocum, 155; A. Wood, 156; A. Hocking, 159; J. Proctor, 162; S. Bowen, 155.

425 series and over: N. Collins, 496; B. Hadley, 470; R. West, 461; R. McGibney, 501; G. Wilkerson, 445; S. Steele, 449; D. Kinsey, 461; K. Chapman, 448; G. Baczynski, 463; B. Smith, 474; N. Miller, 427; A. Hocking, 461.

Charlie Brown & Snoopy's Friends Prep Division

Standings as of March 11

Standings as of March 11			Women, series over 425: S. Walton, 477; K. Schultz, 429; B. Nutt, 445.
	W	L	
d Guys	56 1/2	18 1/2	Women, games over 150: B. Nutt, 477; K. Schultz, 455.
Bearcats	44	28	North: 477; K. Schultz, 455.
Pinfighters	43	32	Klappierich, 353; W. Lano
Fantastic 5	42	33	160; S. Walton, 152, 170; B. N
Strikers	40	32	162; S. Ward, 160.
Pros	35 1/2	39 1/2	
Stingers	31	44	
Knights	21	54	
Games over 100: M. Bowen, 138;			

Junior House Leads

Standings as of March 11



NORTH ELEMENTARY SCHOOL NOTES

THIRD GRADE—

Teacher: Mrs. Peet
Reporters: Whitney Jones
and Paula Haist

In our class we have been talking about the solar system. We heard reports on some of them. Monday, March 6, we heard reports on Mercury and today, March 9, we are going to listen to a report on Pluto. We had a quiz on the solar system. Here are the four biggest planets, Jupiter, Saturn, Uranus, and Neptune. Here are the five smallest planets, Mercury, Pluto, Mars, Venus and Earth. We put a chart up of all the planets going around the sun. Our teacher taught us how to write limericks. They have a rhythm to go to. If you remember the rhythm, you will know right away how to write limericks.

FOURTH GRADE—

Teacher: Mrs. Hafer
Reporters: Leah Gaudet, Deborah Connell and Marsha Liebeck

When we studied Africa, Leah Gaudet and Kurt Walworth made African villages. Kurt made his hut of toothpicks and Leah made hers of straw. We made African masks of sawdust and when they are dry, we will paint them.

After Africa, we studied Egypt and made Egyptian mosaics with small squares of paper. Kirk Myers made a scene of the pyramids and even painted on the inside walls of them.

We are doing averaging in arithmetic and find it very easy. We made pollution posters to put up in town. Doug Houk's and Sharon Kropf's posters were picked as the best ones.

We have been working on S.R.A. On March 23 we go to the Detroit Art Museum for our first field trip this year.

We have a new girl in our room. Her name is Carter Timmins and she is from Boston. We hope she likes North school.

Kurt Walworth brought in a real nice rock collection that he has been working on for several years. Scott Robertson brought in a rock collection and a shell collection.

We made clay ceramics. Some of the things are Dutch shoes, swans, dogs, candle holders, canoes and turtles.

Our birthdays this month are: Sue Shafer, Sherry Gadberry, David Eisele and Sherri Baysinger.

Teacher: Mr. Schmunk
Reporters: Kent Heller and Drew Sprague

We have a microfilm projector. It has 200 films from Xerox Corp.

Dan Cady has moved to Mio. We all miss him. We are reading a new unit in science. We are talking about Switzerland in social studies. We learned that Switzerland is called the Roof of Europe. It is also an important vacation land because the Alps Mountains are there.

Teacher: Mrs. Paplawsky
Reporters: Kelly Krieger, Barry Scott and Karl Bell
In art, we worked with paper mache. We made clay animals.

We are going to fire the animals and glaze them and then fire them again.

Monday, we had a kidney test. We have new arithmetic. It is called geometry. All of us like it. Patty Hume, Tonia Williamson, Felicia Poquette drew posters about pollution in our world. We had three birthdays this month. They are Mark Lesser, Felicia Poquette, Mary Beth Blanchard.

In sports we played our first baseball game. Our team won, 16-15.

In gym our teacher's name is Mr. Werewine. We have a good time. We like it.

We made sawdust huts. We caught a mouse in our room. Kelly put it in the janitor's room.

We are having two films today called "I'm no fool on a bicycle" and "Ancient Rome."

Teacher: Mrs. Crouch
Reporters: Jeffrey Rabbitt and Larry Wisniewski

In art we are making papier mache animals. In math we are doing long division. In science, we made a weather chart. We are doing experiments.

Janis Proctor is in our class and she got runner-up in the spelling bee.

The president of our class is Janis Proctor. The vice-president is Veronica Satterthwaite. Our treasurer is Marcie Hava and the secretary is Kris Steinaway. In our class we have the boy and girl of the week. This week's boy and girl of the week is Chuck Young and Robin Gillespie.

Teacher: Mrs. Mortensen
Reporters: Nicolette Cordin and Kelly Gaudet

In math we are working on fractions, adding and subtracting like fractions. We are changing improper fractions to mixed fractions and reducing. In social studies, we did presidents reports. First we did the notes, then we did the reports. In art, we made papier mache.

In ecology, we are going to have a poster contest. We also visited the waste treatment plant. We plan to go on a litter pick-up. We have seen movies of animals in the U.S.A. in all four seasons.

Teacher: Mrs. Winkle
Reporters: Theresa Thompson and Penny Wood

In art we are making a papier mache animal zoo. Some of the animals are: a giraffe, an elephant, a rabbit, a cat and many other good things.

Every Wednesday, the fifth grades have to square dance. In the spring the best square dancers are going to be picked to square dance in the Spring Concert.

Arnel Minix's poster is one to be put up in the gym. We hope it will tell everybody not to litter on our playground or anywhere else.

Our class has a record of eating habits. If you eat all your hot lunch you get a star and if you don't you don't get a star.



THE BRAWL: Chelsea High school students fight it out in a scene from their production of "Guys and Dolls," slated for this week-end at the high school. Pictured in the scene, taking place in a Cuban nightclub, are Dan Schuelke, Larry Jones, Craig Alter, Dave Hess, and others. More than

100 Chelsea students have worked together to recreate the mood of Broadway in the twenties—gamblers, "hotbox girls," and even the Salvation Army. Curtain time is 8:30 tonight and 8 p.m. Friday and Saturday.



GIRL SCOUTS

TROOP 82—
Our father-daughter banquet was Monday night. Each troop did something to entertain. Each Scout brought as many pennies as she was old to put in the Juliette Lowe fund. It was the Girl Scout birthday. We all enjoyed it very much.
Wendy Myers, scribe.

TROOP 689—
The junior patrol opened our meeting with the flag ceremony Wednesday. Jerry Herick received pets, my home, collectors, and housekeeper badges. Michelle Hafner received the book badge. Teresa Hoffman received housekeeper badge. Larie Flinn received my home badge. Karen Blanchard brought treats.
Jenny Herick, scribe.

4-H Spring Achievement Slated Friday, Saturday At Dexter High School

March 17 and 18 are two days which have long been cherished on the calendars of 4-H seamstresses, knitters, woodworkers, leathersmiths, and photographers. That is the date of their annual Spring Achievement, their biggest event of the year.

This year's exhibition will be held in the Dexter High school gymnasium. Preliminary judging will take place Friday night, March 17, starting at 7:30. Saturday night will be the final judging and the county fashion show. The public is invited.

Trying to drown your troubles in liquor is like putting out a fire by throwing gasoline on it.

Family Night Event Planned at Assembly of God

A family night has been planned for families and friends of the First Assembly of God of Chelsea, 14900 Old US-12 East, on Saturday night, March 18, according to pastor T. B. Thodeson.

The evening will begin with a pot-luck dinner at 6:30 p.m. After dinner, games are planned for the youth and children, while adults will gather to hear a recording by Dr. Forrest Stevenson, a specialist in family counseling. A review of church development will follow with a preview of new projects.

A special feature of the evening will be a program of song presented by the Rontley Family Singers of St. Johns. They will also be guest singers in the morning service on March 19.

When an escort is a perfect gentleman, maybe there's something wrong with the gal, too.

Servicemen's Corner

Pvt. Duane Bycraft Completes Army Basic Training at Ft. Knox

Ft. Knox, Ky.—Army Private Duane B. Bycraft, 18, son of Mr. and Mrs. Bruce Bycraft, 12493 56th Church Rd., Chelsea, Mich., recently completed eight weeks of basic training at the U.S. Army Training Center, Armor, Ft. Knox, Ky.

He received instruction in drill and ceremonies, weapons, map reading, combat tactics, military courtesy, military justice, first aid, and army history and traditions. Pvt. Bycraft served with Company C, 10th Battalion of the 5th Training Brigade.

He is a 1971 graduate of Chelsea High school.

\$96 million has been set aside to further develop the Kingston and Montego Bay International Airports.

High School Honor Roll

March 10, 1972

9th GRADE—

David Alber, Susan Allen, Glenn Alter, Thomas Ball, Karen Bassett, Steven Bennett, Mary Beth Chandler, Keith Cockburn, Deborah Conklin, Deborah Cross, Jodi Daniels (all A), Connie Edwards (all A), Teresa Gilbreath, Francis Grohner, Gregg Hafer, Cindy Harok (all A), Merry Hoffmeyer, Janis Hopkins, Krista Kargol, Teresa Lewis (all A), Kim Longworth, Lois Lovely, Laurie Mann, Kim Miles, Joseph Muldoon, Randy Musbach (all A), Gary Nevill, Greg Nevill, Melinda Newcome, Wendy Osinski, Pamela Padgham, Mark Pennington, Joanne Popovich, James Powers, Richard Robbins, Valeri Robertson, Debra Rossbach, John Schaefer, Elaine Schenk, Lori Schaller, Sharon Schiller, Robin Schneider, Lori Schneider, Linda Shadoan, Susan Shaw, Linda Simon, Brian Smith (all A), Shawn Spaulding, Carol Spencer, Victor Steinbach, Cheryl Stepp, Jill Steward, Cindy Turcott, Jeffrey Webot, Daniel Williams, Paul Wood, Lola Worden.

Spencer, Jeffrey Sprague (all A), Leona Stewart, Susan Stoner, Stephen Straub, Jennifer Tandy, Roben Terns (all A), David Tucker, Polly VanSambrouck, Mary Verchereau, Lynette Villemure, Carol Warywoda, Robert Weir, Barbara Whitesall, Colette Wright, Alicia Young.

11th GRADE—

Ronald Adams, Stephani Aldrich, Craig Alter (all A), Patricia Ball, Jeanette Bauer, Frances Beach, Elizabeth Belser, Daniel Bertke, Judith Blass, Beverly Bott, Barbara Boylan, Heather Brooks, Kristine Buck, Bruce Burn, Phyllis Buss (all A), Kenneth Buxton, Cheryl Cameron, Dennis Clark, Donald Conklin, Dennis Cosgrove, Gina Cotterman, Jeffrey Danfels, Carole Dietle, Leslie Dietle, Eileen Evans, Carol Ewald, Carol Fairbrother (all A), Sally Gaken, Ronald Gauss, Gilda Gillespie, Mark Grambau, Luther Haab, Jody Hafner, Robert Heydlauff, Dennis Huehl, Nancy King, Diane Klesner (all A), Peggy Kraai (all A), Margaret Lancaster, Tim Lancaster, Debra Lyons, Kris Machlanski, John Mann, Sandra Miller, Sandra Niles, Debra Norris, Carolyn O'Connor, Alicia Pierson (all A), Cynthia Powell, Bonnie Powers, Connie Salver, Norman Schafer (all A), Jeffrey Schmidt, Robert Schneider, Robert Schuelke, Phyllis Shadoan, Stephen Siebert (all A), Tom Skittenhelm, Deborah Slane, Richard Stewart, Karen Sullivan, Rebecca Tibr, William Tite, Reatha Theado, Janet Wackenhut (all A), Jody Walton, Mary Wood, Steven Worden, John Young (all A).

12th GRADE—

Nancy Aldrich (all A), Jeanette Bailey, Debra Banker, Therese Blacklaw, Mary Bott, Randy Briar, Melvin Buss (all A), David Buxton, John Cashdollar, Cynthia Chandler (all A), Dana Cheek, Catherine Clark, Garry Collins, Carol Curtis, Mona Dillon, Susan Dirham (all A), Barbara Duerr, Patricia Eisele, Terri Eismann, Sherree Freeman, Daniel Gaunt (all A), Greta Graham, Judith Graue, Houston Hardy, Joanne Harvey, Michael Hengert, David Hess, Kathy Hopkins, Larry Hopkins, Richard Howard, Karen Johnson, Marsha Johnson, Larry Jones,

4-H Clubs

GARFIELD GANG—
March 8, Garfield Gang met on Orchard St. to work on our dollhouse. Our dollhouse is just about done. The meeting was called to order by Tracy Catell. We played a game called "Nope." Kathy Villemure provided treats. Cindy showed us the club scrapbook. Some of us are going to take the things we sewed to 4-H spring achievement on March 17 at Dexter High school.
Mary Lynn Noah, reporter.

TERRIFIC TAILORS—
"It's spring," our mothers' tea and fashion show, was held Saturday, March 11. We were entertained by a vocal duet performed by Janet Wackenhut and Marsha Johnson, accompanied by Diane Luick.

Afterwards, we put on a fashion show for our mothers. Marsha Johnson was narrator, and the following girls modeled outfits they had made: Cheryl Bares, Tammy Downer, Vicki Downer, Sue Heller, Alice Juergens, Diane Luick, Nancy Oliver, Angie Merkel, Karen Schramm, Gail Wackenhut, Janet Wackenhut, Beth McGinn, and Elizabeth Bush. Refreshments were served.

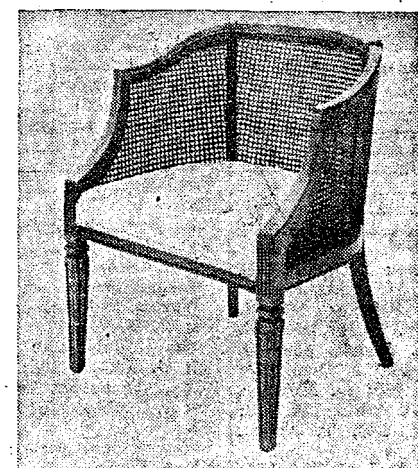
COMMUTERS?
Less than one percent of Nepal can be farmed, forcing some to travel to distant India for seasonal jobs.

Karlene Kangel, Karen Kelemen, Janis King, Steve Knickerbocker, Kenneth Kusterer, Dennis Landwehr, Charles Lane, Kathy Leach, Thomas Lacey, David Lukaskak, Sheri McClain, Douglas McDonaugh, Janice McGaw, Anne McKernan (all A), Thomas McKernan, Robert Mester, Katherine Murray, Glen Musill, Mary Niehaus, Joseph O'Neill, Gregory Osborne, Joan Platt, Jonnie Porter, Laurel Prinzing, Chris Rasmussen (all A), Cynthia Reynolds, Gayle Robbins, Michael Rossbach, Robert Rutherford, Karen Schafer (all A), Kathryn Schafer, Janice Schenk (all A), Jon Schenk, Jackie Schiller, Janice Schramm, Danny Schuelke, Randall Seitz, Janet Shiley, Mary Slane, Todd Sprague, Martin Staub, Floyd Tanner, Thomas Thornton, Tim VanSambrouck, Beth Verchereau, Norbert Weber (all A), Wayne Walton, Robert Wojcik.

OUR MARCH CHAIR SALE FEATURES THESE FOUR FAVORITES

Fruitwood finish chairs with heavy velvet covering and cane accents - Save \$34 off regular price now until March 31st

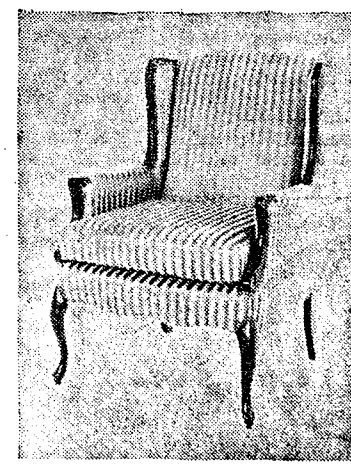
Contemporary cane back tub chair at right features reversible buttoned cushion. Available in Gold, Loden, Champagne Celery, Copper, and Blue. \$99 through March 31st.



This delicately proportioned Louis XV armchair has a cane back and padded arms. Available in either Gold or Champagne. Only \$99.



This contemporary pillow-back features cane side panels and reversible seat. Available in Gold and Loden. Sale priced at \$99.



Provincial wing chair is enhanced by wood accents on wings and arms. Its reversible seat makes it practical as well as beautiful. Only \$99.

Merkel

FURNITURE and CARPET

Main Street in Chelsea • Telephone 475-8621 • Open Monday and Friday Nights 'til 9
Professional Interior Design Consulting

J.B.U. TRAINS YOU FOR A GOOD POSITION SPRING TERM STARTS MARCH 27

★ YOUNG LADY! When you graduate from our Executive Secretarial; Legal Secretarial; Medical Secretarial; or Office Accounting, you will be in demand with good salary.

★ YOUNG MAN! Business needs good accountants, managers, and executives. Complete our Accounting, Business Management, or Data Processing Management and you will be in demand with good salary.

★ Why study liberal arts four or two years?
Student loans; part-time work. Classes 8:00 to 1:00.
Furnished Dormitory Apartments. Employment Placement.
Approved for veterans.
Request catalog. Visit J.B.U. Counsel with us.

Jackson Business University

234 S. Mechanic, Jackson

Dial 789-6123



Mr. and Mrs. Jack Ketchum, Jr.

Constance Balogh, J. Ketchum, Jr., Married in Afternoon Ceremony

Miss Constance Denise Balogh, daughter of Mr. and Mrs. Joseph Balogh, Jr., 236 E. Middle St., and Jack A. Ketchum, Jr., son of Mrs. Wayne Myers and the late Jack A. Ketchum, Sr., of Gobles, were united in marriage Saturday afternoon, March 4, at the Ramada Inn in Ann Arbor.

The ceremony, conducted by the Rev. King William Hanna of the Westside Methodist church in Ann Arbor, was witnessed by 150 guests. Mark Craig honored the couple by singing "Lara's Theme" and the "Theme from Love Story."

The bride chose a long white satin empire-style gown with a built-in train, long cuffed sleeves, a high neck with a sheer tucked insert in front, and Venise lace trim in back. Complementing the gown was a pointed petal Venise lace headpiece with a silk illusion elbow-length veil. The bride's bouquet was of white rose buds with baby's breath.

Attending her sister as maid of honor was Miss Celeste Balogh, attired in a long empire-style gown with a black velvet top and a flowing poppy red skirt. Miss Balogh wore a single red antheria in her hair and carried two red antherias bound in a black ribbon.

The black and poppy theme was carried out in the gowns of the bridesmaids, with Miss Ann Clemmer of Gastonia, N.C., wearing a long poppy red empire-style gown with a v-necked capelet while Mrs. Robert Howard of Chelsea wore a black gown of a similar style. Both bridesmaids carried two white feather flowers tied with a long black velvet bow.

Assisting his brother as best man was Duane Ketchum of Gobles, while John Mustafa of Gobles and Bruce Howard of Island Lake seated the guests. Serving as flower girl was Miss Terry Slocum of Allen Park, who wore a long poppy red gown with black trim, of the same style as the bridesmaids' gowns, and Randy Sabo of Chelsea served as ring bearer.

For her daughter's wedding, Mrs. Balogh chose a full-length, long-sleeved empire dress of black velvet with white Venise lace and carried a corsage of gardenias. The mother of the bridegroom was gowned in a long-sleeved, full-length empire dress with a white top and a black brocade skirt. Her corsage was of white carnations and sweetheart roses on black.

Following the ceremony the parents of the bride hosted a reception at the Bauer Manor in the Irish Hills. Three hundred guests enjoyed dinner and dancing, with two bands playing.

For her going away outfit the bride chose a black knit pants suit with a red knit accent scarf and carried a corsage of red carnations on black. Following a wedding trip to Florida, the Ketchums will be at home at Muskrat Lake near Gobles.

The bride is a graduate of Ohsa High school and was employed by the Ramada Inn in Ann Arbor. After the honeymoon, she will be employed by the Ramada Inn in Kalamazoo. The bridegroom is a graduate of Gobles High school and is manager of a hardware store in Gobles.

Co-Op Nursery School Notes

Chelsea Co-op Nursery is celebrating its 15th anniversary this year. Our big project for the year has been the redecorating of the interior of our little red school house. We are very excited and thankful for all the co-operation that has been shared. Our daddies have been insulating, paneling, and building storage shelves. The moms are making shades, wallpapering, and painting. We would like to invite the public to visit our nursery and see our finished project on Saturday, April 8, at which time we will be having our annual rummage sale and bake sale.

Some exciting projects that the children have shared are Valentine's parties, Father's Night, at which time our daddies enjoyed finger painting, having a show & tell, and eating juice and cookies.

Students from the U. of M. have been observing our four-year-old group for a research project. Also, two students from EMU have been doing their pre-school student teaching in our three-year-old group.

The four-year-old morning session have been studying the weather and have been making weather charts.

Applications are now being accepted for the fall enrollment. We would urge anyone who would like to enroll their child to contact Shari Roberts anytime at 475-8904 or 475-7522 very soon as our sessions are filling up fast.

Pamela Spencer on U. of M. Dean's List

Pamela Dorothy Spencer of Chelsea was named to the Dean's List for the fall semester of the current academic year at the University of Maine at Orono. To be eligible, a student had to maintain a "B" or 3.0 average. A total of 1,851 students were honored on the Orono campus, where the student body is approximately 8,000.

Meat thermometers should be inserted in the meat so that the bulb of the thermometer does not rest in fat or on the bone.

Magic Mirror Beauty Salon

Open Monday thru Friday
9 a.m. to 9 p.m.
Saturday, 8 a.m. to 3 p.m.

PHONE 665-0816

It's a TRANSISTOR Watch!
It's a CALENDAR Watch!
It's only \$49.95

CARAVELLE®
by BULOVA

The Caravelle Calendar Transistor runs on a long-life battery from one year to the next. There are no mainsprings to break. No contact points to wear out. And it never needs winding! It's the most reliable calendar watch you can buy... and it's priced so low.

Translator "B"
Calendar, water-resistant, stainless steel, luminous dial.



WINANS JEWELRY

Club and Social Activities

OLDER ADULTS GROUP

Thirty-five members and guests of the Older Adults Group were present March 11 for a dinner given by the Action Group of the Methodist church. The Rev. Clive Dickins gave the opening prayer. In charge of the program were Mr. and Mrs. Eisenbeiser, and Mrs. Clare Warren led the group in singing, with Mrs. L. McCrele playing the auto harp. Mr. and Mrs. Robert Benedict showed pictures of England.

The next meeting of the group will be April 15, a pot-luck at 12:30 at the Methodist Home.

CHILD STUDY CLUB

The March 14 meeting of the Child Study club was held at the home of Mrs. William Rademacher. There were 24 members present and 14 guests introduced. After a brief business meeting, Mrs. Jean Miller introduced Mrs. Ceria Ference, who demonstrated the art of dyeing Ukrainian eggs. Refreshments were served by co-hostesses Sandy Weber and Nancy Dunn. The next meeting will be at the home of Mrs. Richard Borton.

WOMAN'S CLUB

The Woman's Club met Tuesday, March 14, at the club room at the McKune Memorial Library. Mrs. Charles Wilans was welcomed as a new member. Mrs. Paul Maroney, Mrs. James McLaughlin, and Mrs. Ralph Osterle were guests.

Mrs. David Stricker, in charge of the evening's program, introduced the guest speaker, Pat, representing Magic Mirror and Crown Glory Wigs, who spoke on fashion trends in wigs, demonstrating styling and various types of wigs. Hostesses for refreshments were Mrs. Charles Meservia and Mrs. Sylvester Wojcik.

The next meeting will feature a program on government funds to Chelsea. It will be held Tuesday, March 28 at the library club room.

MODERN MOTHERS

Modern Mothers met Tuesday, March 14 at the home of Mrs. Philip Hume for a Greek pastry demonstration by Mrs. Charles Mattoff. Among the foods prepared were stuffed grape leaves and Greek spinach pie. Mrs. Max Plank was co-hostess for the evening.

Thirteen members and three guests—Mrs. Robert Gaiser, Mrs. Robert Ross, and Mrs. Doug Stuart were present. Two new members, Mrs. Randy Johnson and Mrs. Leo Wroubel, were installed.

ROGERS' CORNERS FARM BUREAU GROUP

Rogers Corners Farm Bureau met Friday, March 10 at the home of Mr. and Mrs. Ray Manzel. The meeting began with a lively discussion of tax reform, and it was noted that on the May ballot area residents might be asked to vote on a proposed one mill levy for the Mill Creek Park.

Enthusiasm followed the discussion, with Armin Kuhl winning high for the men and Mrs. John Miller high for the women. Refreshments were served by the Manzels.



DEN 1, PACK 415

We met Thursday, March 9 at the home of our den mother, Mrs. George Atkinson. There was no meeting March 2 because of bad weather. We elected Billy Freeman the new scribe, Kenneth Cobb the new denner and Barry Hinz the assistant denner. We made plans for the March pack meeting and learned a rope trick. The den mother furnished treats.

Billy Freeman, scribe.



LAST CHANCE TO JOIN OUR BEGINNING CROCHET CLASSES
They Start Next Week at only \$1.00 per lesson.
For more information call 475-2512. Hope to hear from you!
TAILFEATHER BOUTIQUE
105 N. Main, Chelsea
A FUN PLACE TO SHOP
Phone 475-2512



FAST BREAKING PARTY at the Garys. Mr. and Mrs. Gordon Gary, seated. Left to right Danny Peterson, Mary Wolter, John Paul Vader, Margaret Peterson, Dan Vader, Toby Peterson, Vickie Graham, George Gary, Susie and Mathew Peterson, Sandy Peterson.

Baha'is Prepare for New Year

Saturday, March 11, Mr. and Mrs. Gordon Gary of 14401 Riker Rd., hosted a Fast Breaking dinner for the Baha'is of Chelsea

Evangelist Walker Will Speak at Sharon Church

Evangelist Billy Walker of Southgate, will be speaking every night next week at the Faith Community church, 8400 Sharon Hollow Rd., Manchester.

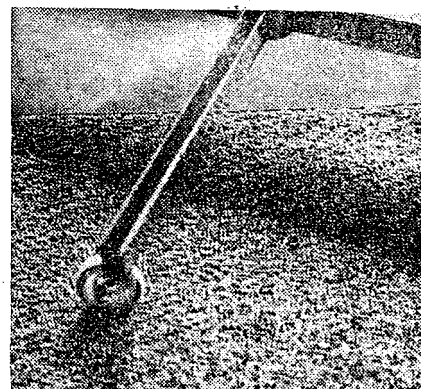
Services will begin Sunday, March 19, and run through Sunday, March 26. Each night's meeting will begin at 7:30 p.m.

Billy Walker has spoken to nearly two million people while conducting crusades across the state. A Detroit pastor has described him as "a young preacher of real distinction," adding that "his sermons are straight for the mark, with fascinating illustrations, well told. He holds the interest of young and old alike." He is in his early thirties.

FROM ABOVE?

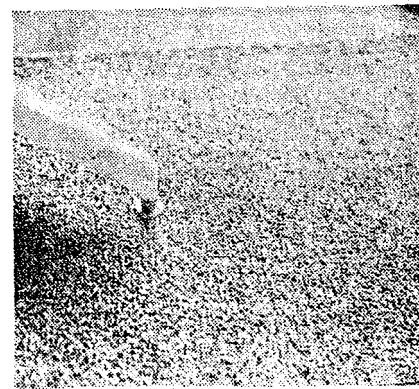
Ships could be given accurate navigational aids via satellites.

Office Carpet Sale



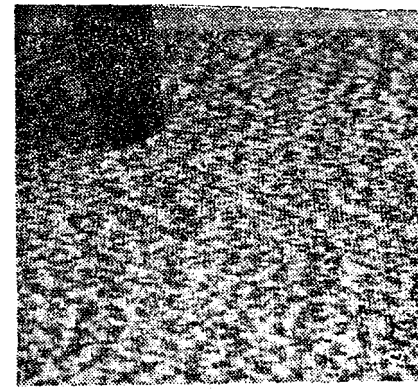
The President

This fine commercial carpet stands up to the heaviest wear and soiling. Fire and abrasion resistant. Made of continuous filament tufted nylon with permanent static control. Specially priced for March Sale.



The Vice-President

A fine 100% Antron Nylon pile office carpet that meets or exceeds F.H.A. standards. Soil and stain resistant with noise reducing characteristics. Scotchgard, anti-static. See chart below for sale prices.



The Treasurer

This 100% nylon carpet has exceptional wearability as well as high resistance to soiling, mildew, and insects. Easy to clean, acoustically-controlled—this carpet is available in a wide variety of decorator colors. See chart below.

1-50 Yds. 50-100 Yds. 100-200 Yds. Over 200 Yds.

The President	\$9.95 yd.	\$9.49 yd.	\$8.95 yd.	\$7.95 yd.
The Vice-President	7.95 yd.	7.49 yd.	6.95 yd.	5.95 yd.
The Treasurer	5.95 yd.	5.49 yd.	4.95 yd.	4.29 yd.

Sale Ends
March 31st

Merkel

FURNITURE and CARPET

Main Street in Chelsea • Telephone 475-8621 • Open Monday and Friday 'til 9
• Professional Interior Design Consulting

St. Louis School Notes

Saturday, March 4, the Rev. Fr. Schmitt of Manchester, and two cameramen from TV Channel 6 came to the school to take pictures of the boys, band, and classes. It is part of a program for the Diocese Development Fund of Lansing.

Sunday, March 5, the boys watched a movie, and Monday, Craig Chapman's birthday was celebrated with cake and ice cream and entertainment by the band.

Tuesday, March 7, the boys along with Fr. Umberto and Frank Sweeney, drove to Ann Arbor to watch a U. of M. basketball game, with tickets provided by Don Canham of the University. On March 9 at 4 p.m. a basketball game was played against a Grass Lake squad.

Last week-end the boys went home, returning early Sunday afternoon with their parents for an open house. The parents visited classrooms and observed the work of their sons, and afterwards the boys served them punch, coffee, and cookies.

Also returning last week-end was Fr. Germano, who had accompanied Fr. John Rizzi to Guatemala, where he is stationed as a missionary. Fr. Germano picked up many souvenirs and reported that it was hot.

The school has a new dog, a German Shepherd named Missie.

SCHOOL LUNCH MENU

Week of March 20-24
Monday, March 20—Beef and shell macaroni casserole, cabbage salad, bread and butter, rice pudding, raisin pudding, milk.
Tuesday, March 21—Hera burgers on hot dog buns, buttered green beans, ginger bread with whipped topping, milk.
Wednesday, March 22—Lasagna, buttered corn, hot rolls and butter, ice cream, cookie, milk.
Thursday, March 23—Beans and franks, tater tots, catsup, homemade yeast and butter, dessert, milk.
Friday, March 24—Fishburgers and buns, tartar sauce, mixed green salad, potato chips, orange Jell-O with pineapple, milk.

Tastes
good!

Milk's a taste
treat for the
entire family
to enjoy
daily.



Arrange delivery of our
top-quality milk and other dairy products.

Hickory Ridge Farm Dairy

(Successor to Weinberg Dairy)

Stockbridge, Mich.

Phone (517) 851-3000



LEADERSHIP WINNER: Charlene Powers, a senior at Michigan State, is presented with the Leadership Award from the University's college of agriculture and natural resources. Making the presentation is Dr. Norman Brown, assistant di-

Charlene Powers Presented MSU Leadership Award

On March 2 Charlene Powers of Chelsea was presented with the Leadership Award of Michigan State University's College of Agriculture and Natural Resources.

Miss Powers, a senior majoring in agricultural communications, was recognized for her leadership and participation in extra-curricular activities. Her activities have included being editor and assistant editor of Focus, a stu-

dent magazine, and president of the MSU chapter of Agricultural Communicators of Tomorrow. She has worked on several university publications, including the MSU yearbook, and has served as vice-president of the campus 4-H, secretary-treasurer of the Student Senate, and a member of Project L.E.A.D. and Explore '70, a student public relations team. A member of Alpha Chi

Omega, she has been sports committee chairman for Landon Hall, a member of the MSU choir, and treasurer of Farm House fraternity's Little Sisters of the Pearl. Charlene, who will graduate in June, will be an International Farm Youth Exchange student in Greece later this year. She is the daughter of Mr. and Mrs. Harold C. Powers, 12930 Scio Church Rd.

Kerry Kargel Winning for Grand Valley

A few years ago, Kerry Kargel was bringing home victory after victory for the Bulldog wrestling team. Now he's doing it for Grand Valley State College.

Last week he and four other Grand Valley matmen traveled to the NAIA National Wrestling Championship at Oregon Tech College in Klamath Falls, Ore.

During the year, the Grand Valley team put together an impressive 114-4 dual meet record, the best ever since the wrestling program was started three years ago by Coach Jim Scott. Kargel finished the year with the second best percentage on the team, compiling a 14-5 record. Prior to the national meet, he had captured the 150-pound class championship at the district meet, held at Grand Valley.

Kargel, a junior, is a transfer from Grand Rapids Junior College, which last year had one of the finest junior college wrestling teams in the country. He is the son of Mr. and Mrs. Clarence Kargel, 14400 Island Lake Rd.

THE 3 R's?

Although new schools are rising almost every Moroccan village, the basic curriculum continues to emphasize religion, the Arabic language, and arithmetic.

And now a word about H&R Block's competition.

Because we think our competition represents more of a threat to you than it does to us, we're going to help you sort them out.

Your Family

The greatest people in the world. Most of the time. Unfortunately, most of the time doesn't include income tax time. Because the last thing you need when you're doing your taxes is an aunt who took an accounting course just before she dropped out of college. Or a father who thinks how much money you make and what you do with it is something the rest of the family should know about.

Your Neighbors

You know the type. The mild-mannered shoe salesman next door who suddenly turns into a mathematical genius just about the time income tax is due. He knows all the angles. Some of which even the Internal Revenue Service doesn't know about yet. And he's willing to share them with you, "Just to be neighborly."

You

Your own worst enemy. All year long you can't balance your check book, but that doesn't stop you. Armed with your W-2's, a few reams of paper and a couple of gallons of coffee you bravely attack that stack of forms. You may be taking deductions you're not entitled to, and entitled to deductions you're not taking. So, should you be doing your own taxes?

We're H & R Block, with over 6,000 conveniently located offices manned by thousands of specially trained tax preparers who eat, sleep, and drink income tax returns. People who set out to save you money and much of the time do it. The cost? Fees start at \$5 and the average cost was under \$12.50 for over 7 million customers we served last year.

Furthermore, if your return is audited we will accompany you, at no extra cost, to the Internal Revenue Service and explain how your return was prepared, even though we will not act as your legal representative.

And everyone is eligible to receive our year 'round service which is covered by our one time fee. No extra charge for help with audits, estimates, or tax questions.

We know the people we've just told you about will do your income tax return for less than we can but we don't think you can afford them.

DON'T LET AN AMATEUR DO H&R BLOCK'S JOB.

H&R Block.
The income tax people.

OFFICE HOURS:
9 A.M.-6 P.M. MON. THRU SAT.
NO APPOINTMENT NECESSARY
OPEN TODAY!

105 N. Main St., Chelsea
Phone 475-2752

Jaycees Plan Walk Benefit For Mankind

The Chelsea Jaycees at their meeting last week appointed Michael Eubanks chairman and Rick Gilmore co-chairman of the Project Concern Walk For Mankind, to be held May 6.

Founded in 1961 by James W. Turpin, a California physician, Project Concern is a non-profit, medical service organization currently maintaining five medical clinics in Hong Kong, two hospitals in Vietnam, a maternity and pediatric hospital in Mexico, clinics for the Navajo Indians in New Mexico and for mountain people in Tennessee, and medical and dental facilities for Mexican-American migrant farm workers in Texas.

The work of these programs is financed largely by Walks for Mankind. During 1970-71 communities across the nation staged more than 200 walks and raised approximately \$1,500,000.

The walks are conducted by students, who solicit financial sponsorship from area residents. According to chairman Eubanks, the Jaycees this year are planning on a walk of about 15 miles. On the same day, walks will be held in other communities throughout Michigan.

Although the main purpose of the walks is to support Project Concern, the Jaycees will keep a percentage of the money collected for use within the Chelsea community. Which projects will be financed will be decided jointly by the Jaycees and a committee of students involved in the walks.

This year's Walk for Mankind chairman, Michael Eubanks, has been an active resident of the Chelsea community for several years, working on many community service projects through the Jaycees. Co-chairman Rick Gilmore is a new member of the Jaycees.

Man-Wife Battle It Out Monday In District Court

A Chelsea woman and her ex-husband fought it out in court three times Monday, with the husband pleading guilty to malicious destruction of property and being found guilty in one case and not guilty in another case of assault and battery.

Mrs. Penelope Brown, 24, of 237 Railroad, pressed the three charges against her former husband, Robert Daniel Brown, 31, of 862 Plainville Dr., Gregory. The first case of assault and battery occurred last August, and, as it took place outside of village limits, fell under the jurisdiction of the Washtenaw County Sheriff's Department. Tried in district court Monday, Brown was found not guilty.

Five months after the first incident, Mrs. Brown again ordered a warrant sent out for her husband, claiming he had come into her home and beaten her up. On Jan. 10, Chelsea Police Chief George Meranuck and Patrolman Lenard McDougall picked up Brown, who pleaded not guilty in his arraignment but was found guilty at his trial Monday.

The third charge—malicious destruction of property—stemmed from an incident on Feb. 12 when Brown broke his way into his ex-wife's house after being refused entry. Picked up on warrant four days later, Brown pleaded not guilty at his arraignment but at the trial, held Monday along with the two others, he changed the plea to guilty. He is now out on a total of \$100 bond and will be sentenced for both offenses April 24.

Anyone who begins this day's work with reluctance and ends it with joy will never be a howling success at anything.



If something happens to your Mobile Home you'll be protected with

Auto-Owners Mobile Home Insurance

See Your A-O Man

A. D. MAYER AGENCY, INC.

"Your Protection Is Our Business"
115 Park St. Chelsea
Phone 479-5061

Auto-Owners Insurance
Life - Casualty - Fire - Auto

RICK'S MARKET

"Your Spartan Store"

M-52 North of Chelsea

Phone 475-2898

Open 8 a.m. to 9 p.m. Sunday thru Thursday. 8 a.m. to 10 p.m. Friday & Saturday.

Prices Effective Thurs., Fri., Sat., Sunday, Mar. 16, 17, 18, 19

USDA CHOICE	Sirloin Steaks . .	\$1 ³⁹ lb.
USDA CHOICE	Round Steaks . . .	\$1 ¹⁹ lb.
USDA CHOICE	T-Bone Steaks . .	\$1 ⁶⁹ lb.
USDA CHOICE	Porterhouse Steak	\$1 ⁶⁹ lb.
1-LB. PKG. ECKRICH ALL-MEAT	Hot Dogs	79 ^c lb.
ANY 8-OZ. PKG. ECKRICH	Lunch Meat . . .	69 ^c

FRESH PRODUCE

SUNKIST	Oranges	12 for 59 ^c
PAK FRESH	Carrots	21 ^c
GOLDEN, RIPE	Bananas	19 ^c lb.
FRESH, CRISP	Lettuce	25 ^c Head

A Complete Line of Fresh Produce at Low, Low Prices!

SPARTAN

POTATO CHIPS

Are Back!

49^c

1-LB. BAG ONLY

Health & Beauty Aids

2-OZ. SKINNY DIP	Spray Mist Cologne	\$1.59
16-OZ. BOTTLE	Tame Creme Rinse with Body .	\$1.29
13-OZ. ALL-PURPOSE AQUA NET	Professional Hair Spray . . .	59 ^c
10-OZ. DRY & NATURAL HAIR CONTROL	Command for Men	\$1.19
10-FL. OZ. NIGHT-TIME COLD MEDICINE	Vick's Ny-Quil	\$1.79
5-OZ. TUBE FLUORIDE FORMULA & SPECIAL BRIGHTENER	Gleem II Toothpaste	66 ^c

CIGARETTES

Your Favorite Brands

39^c pk. \$3.39 crtn.

ICE COLD BEER - WINE PACKAGE LIQUOR

9 1/4-OZ. CAN BREAST O' CHICKEN (Reg. 57c)	Tuna Fish	39 ^c
12-OZ. CAN HAFNIA	Luncheon Meat	49 ^c
24-OZ. CAN ARMOUR (Reg. 73c)	Beef Stew	49 ^c
MIX OR MATCH BETTY CROCKER	Cake Mixes . . . 3 for \$1	
14 3/4-OZ. CAN ALL ALPO	Dog Food	29 ^c
3-LB., 1-OZ. BOX	Tide	79 ^c
1-LB., 5-OZ. CAN	Ajax Cleanser . . 2 for 51 ^c	
4 3/4-OZ. JAR MIX OR MATCH GERBER	Baby Food . . 3 for 29 ^c	

FROSTIE ROOT BEER
8 pak 49^c

10-Oz. Returnable Bottles

Plus Deposit

Come and See Our FANTASTIC PRICES ON BEVERAGES

CAMERA BARGAINS

KODAK INSTAMATIC X-25 COLOR OUTFIT
Only \$26.79

POLAROID	Big Shot Portrait Land Camera . .	\$17.95
POLAROID	Super Colorpak Land Camera . .	\$37.95
POLAROID	Square Shooter Land Camera . .	\$32.95

FILM SPECIALS

TYPE 88	Polaroid Colorpack Film	\$3.49
TYPE 108	Polaroid Colorpack Film	\$4.69
KODAK	Super 8 Movie Film	\$2.40
	Kodak 127	99 ^c
	Kodak 126	\$1.66
	Kodak 135	\$1.66
	Kodak 620	99 ^c

We Also Process Your Film at Low, Low Low Prices!

HURRY!

1

¢

**SALE STARTS
MARCH 16th**

SALE

**2 FOR MFR'S LIST
PRICE OF 1
PLUS A PENNY**

**... WITH BONUS BUYS
AT SPECIAL LOW PRICES BUT NOT
2 FOR 1 PLUS A PENNY**

Some Rexall franchised stores sell some Rexall-brand products below manufacturer's list price. Look for these information cards throughout the store for your actual savings.

For Mfr's List Price of **PLUS A PENNY**

**Rexall One Tablet Daily
MULTIPLE VITAMINS
with IRON**

100's Mfr's List Price \$2.88 **2 for \$2.89**
(V-986)

**Rexall Minuteman
Chewable
Multiple Vitamins**

100's Mfr's List Price \$2.69 **2 for \$2.70**
(V-892)

**REXALL AEROSOL
Redi-Shave or Lavender
Shaving Cream**

11-oz. Mfr's List Price \$1.09 **2 for \$1.10**
(P-3227, 8, 3244, 5, 9)

**REXALL BRIGHTENER
TOOTHPASTE**

6 3/4-oz. Mfr's List Price \$1.09 **2 for \$1.10**
(P-1205)

For Mfr's List Price of **PLUS A PENNY**

REXALL ASPIRIN
5 Grain—100's
Mfr's List Price 79c
2 For 80c
Our Everyday Price

For Mfr's List Price of **PLUS A PENNY**

**VITAMIN C
TABLETS** 100's

2 for \$1.08



For Mfr's List Price of **PLUS A PENNY**

REXALL Mouthwashes
MI-31, Kleenox, Blue Oral.
Pint Sizes.
Mfr's List Price 99c
2 for \$1.00
(D-50, 71, 831)

**REXALL BRITE SET
HAIR SPRAY**

13-oz. Unscented, Regular, Casual or Hard-To-Hold
Mfr's List Price 89c
2 for 90c
(CN-412-4, 20)

REXALL ASPIRIN
5 grain—100's
Mfr's List Price 79c
2 for 80c
(D-935)

Q 5020-5030 Prices subject to change without notice and to tax where applicable. Right reserved to limit quantities - subject to applicable laws. Sale Ends March 25th.

SUPPLEMENT TO THE CHELSEA STANDARD, THURSDAY, MARCH 16, 1972

403400

CHELSEA *Rexall* DRUG

Free Prescription Delivery

101 NORTH MAIN

PHONE: 475-4611

CHELSEA, MICHIGAN

Rexall Medicines

FOR MFR'S LIST
PRICE OF

PLUS A PENNY



Box of 30 - Rexall
**ANTIHISTAMINE
TABLETS** (D-661)
Mfr's List Price - \$1.59

2 for \$1.60

Rexall 10-Grain
ASPIRIN, 100's (D-640)
Mfr's List Price - \$1.26

2 for \$1.26

Rexall - Plus
**BEER, WINE &
IRON TONIC** (D-472)
Mfr's List Price - \$2.30

2 for \$2.30

Rexall
DIURETIC PILLS
60's (D-124)
Mfr's List Price - \$1.49

2 for \$1.50

Rexall Eudamine
SUPPOSITORIES, 12's
Mfr's List Price - \$1.35 (D-827)

2 for \$1.36

2-oz. - Rexall
EYELO EYE LOTION
Mfr's List Price - \$1.29 (D-380)

2 for \$1.30

3-oz. - Rexall
**FIRST-AID SPRAY
ANTISEPTIC** (W-312)
Mfr's List Price - \$1.39

2 for \$1.40

4-oz. - Rexall
FOOT POWDER
Mfr's List Price - 75c (D-156)

2 for 76c

1 1/2-oz. - Grouseless
**Athlete's
Foot Ointment** (D-565)
Mfr's List Price - \$1.29

2 for \$1.30

Rexall
**GLYCERIN
SUPPOSITORIES 12's**
Adults, Infants (D-217, 20)
Mfr's List Price - 57c

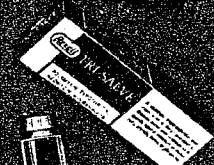
2 for 58c

85's - Rexall
**MILK OF MAGNESIA
TABLETS**
Mfr's List Price - 89c (D-261)

2 for 90c

Pint - Rexall
MINERAL OIL
Mfr's List Price 85c (D-75)

2 for 84c



100's - Rexall
MODACIN TABLETS
Mfr's List Price - \$1.29 (D-60)

2 for \$1.30

3-oz. - Rexall
**REX-SALVINE
BURN SPRAY** (D-600)
Mfr's List Price - \$1.69

2 for \$1.70

Pint - Rexall
RUBBING ALCOHOL
Mfr's List Price - 82c (D-605)

2 for 84c

8-oz. - Triple Action
COUGH SYRUP (D-417)
Mfr's List Price - \$1.19

2 for \$1.20

1/4-oz. - Rexall
TRI-SALVE (D-252)
Mfr's List Price - 98c

2 for 99c

Rexall
**ZINC OXIDE
OINTMENT 2-oz.** (D-835)
Mfr's List Price - 79c

2 for 80c

Pint - Rexall No. 6
**PINE OIL
DISINFECTANT** (D-4048)
Mfr's List Price - \$1.39

2 for \$1.40

3-oz. - Rexall
GLYCERIN (U-1269)
Mfr's List Price - 89c

2 for 90c

4-oz. - Rexall
**GLYCERIN &
ROSEWATER** (U-1270)
Mfr's List Price - 89c

2 for 70c

Pint - Rexall
**HYDROGEN
PEROXIDE 3% - 10 Vol.**
Mfr's List Price - 56c (U-285)

2 for 56c

Pint - Rexall
WITCH HAZEL (U-3668)
Mfr's List Price - 89c

2 for 90c

2

FOR MFR'S LIST
PRICE OF

PLUS A
PENNY

REXALL—Redi-Spray DRY
**ANTI-PERSPIRANT
DEODORANT**

5-oz.
Mfr's List Price \$1.39 (P-623)

2 for \$1²⁰

REXALL — Redi-Spray
**AEROSOL
DEODORANT**

5-oz.
Mfr's List Price 98c (P-611)

2 for 99^c

8-oz. REXALL
**HAIR SETTING
GEL** Regular or
Hard-To-Hold

Mfr's List Price \$1.25 (CN-293, 4)

2 for \$1²⁶

8-oz. — REXALL
**HAIR SETTING
LOTION** Regular or
Hard-To-Hold

Mfr's List Price \$1.49 (CN-252, 4)

2 for \$1⁵⁰

BRITE CONDITIONING
CREME RINSE

8-oz.
Mfr's List Price \$1.19 (P-3188)

2 for \$1²⁰

8-oz. — REXALL
**FAST DANDRUFF
TREATMENT
SHAMPOO**

Mfr's List Price \$1.29 (P-3207)

2 for \$1³⁰

5-oz. REXALL
**AFTER SHAVE
LOTION**

Mfr's List Price 79c (P-3220, 40)

2 for 80^c

6 1/4-oz. — REXALL
TOOTHPASTE

Mfr's List Price 99c (P-1195)

2 for \$1⁰⁰

SPUNTEX "TRUE SUPPORT"
**LYCRA SPANDEX
SUPPORT
PANTI-HOSE**

Mfr's List Price \$6.98 (Z-7300-3)

2 for \$6⁹⁹

SPUNTEX LYCRA SPANDEX
**SEAMLESS
SUPPORT
STOCKINGS**

Mfr's List Price \$5.95 (Z-4141-4)

2 for \$5⁹⁶

BONUS BUYS

**300
COTTON BALLS**

Mfr's List
Price 69c
(W-3672)

49^c

REXALL
QUIK BANDS

Family Size, 45's and
Regular Size, 31's

**BOTH
FOR 78^c**

(W-105)

Francis Harriet
Foaming
Milk Bath



Raspberry
Scented
8-oz.

\$1⁸⁹

(X-4772)

**SPECIAL
BONUS
BUYS!**

Scripto
**REFILLABLE
LIGHTER**

Butane match w/ refill
Ass't. colors

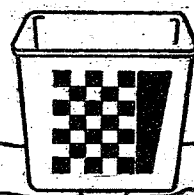
99^c



**AUTO LITTER
BASKET**

77^c

(X-393)



**STYLING
BRUSH**

For professional
styling at home!

39^c

Rex **SUPER
STAINLESS STEEL
BLADES**

10's

66^c

(X-1323)



9 1/2-Inch
PLAYBALL

Hours of fun
for the kids!

69^c



Deluxe
**IRONING
BOARD
PAD &
COVER SET**

\$1⁹⁹

(X-343)



KIDDY &
YOUTH



SUNGLASSES

Ass't. colors
& styles!

37^c

(X-396)

FOR MFR'S LIST
PRICE OF

PLUS A
PENNY

**ELECTREX
HEAT PAD**

3-Heat
Mfr's List Price - \$7.95

2 for \$7⁹⁶

(X-310)



**KLENZO
TOOTHBRUSHES**

Assorted Styles
Mfr's List Price - 49c

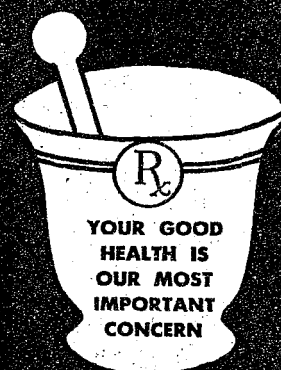
2 for 50^c

(B-355-59)



**2 FOR MFR'S LIST
PRICE OF
PLUS A
PENNY**

1¢ SALE



YOUR GOOD
HEALTH IS
OUR MOST
IMPORTANT
CONCERN

FOR MFR'S LIST
PRICE OF

PLUS A
PENNY

**Rexall Alco Rex
RUBBING
ALCOHOL**



Pint
Mfr's List Price 63¢
2 for 64¢
(D-413)

**Buffered
Aspirin**



100's
Mfr's List Price \$1.17
2 for \$1.18
(D-689)

**BONUS BUY
CHINA
STACK MUGS**

Your choice of 4
floral designs in
assorted colors.

33¢



FOR MFR'S LIST
PRICE OF

PLUS A
PENNY

**Rexall - Fast
Home Permanent**

5 Types

Mfr's List Price \$1.89

2 for \$1.90



(CN-1655-9)

**Cara Nome
HAND & BODY
LOTION**

8-oz.
Mfr's List Price \$1.09
(CN-3142)

2 for \$1.10



BONUS BUY

**REXALL
QUIET-NITE**

Night Time Cold
Medicine, 6-oz.



Mfr's List Price \$1.29
79¢
(D-23)

Coupon Expires
March 25, 1972

BONUS BUY

**REXALL
SPRING GREEN
MOUTHWASH**

Pint Size

Mfr's List Price 99¢



57¢
(D-77)

Coupon Expires
March 25, 1972

**BONUS BUY
4-Piece
KITCHEN
CUTLERY SET**

Includes large carving
sliced, citrus and rock-
tail knives in stainless
steel with wood-grain
plastic handles. Dish-
washer safe.

99¢



**BONUS BUY
HAIR
TRIMMER
COMB**

Trim, shape or style your
own hair! Also excellent
for razor cuts.

39¢



CARA NOME

**Hand & Body
Cream**

4-oz.
Mfr's List Price \$1.09

2 for \$1.10



(CN-610)

BONUS BUYS at SPECIAL LOW PRICES

... not 2 for 1 PLUS A PENNY

**Bottle of 100 — Rexall Extra Strength
COLD TABLETS**

Prompt relief of cold miseries



Mfr's List Price 3.29
\$1.79
(D-67)

Coupon Expires
March 25, 1972

**Rexall ALUREX
Magnesium - Aluminum -
Hydroxide Gel.**

12-oz.

Mfr's List Price 89¢
(D-10)

69¢

Coupon Expires
March 25, 1972

**Rexall ALUREX No. 2
50 Strip-Packed Tablets**

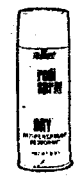


Mfr's List Price 89¢
(D-9)

64¢

Coupon Expires
March 25, 1972

**Rexall Redi-Spray
Dry Anti-Perspirant
Deodorant, 8-oz.**

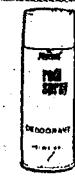


Mfr's List Price 1.49
(P-619)

99¢

Coupon Expires
March 25, 1972

**Rexall Redi-Spray
Aerosol Deodorant
8-oz.**



Mfr's List Price 1.29
(P-610)

89¢

Coupon Expires
March 25, 1972

**REXALL SINUREX, 36's
Relief of Sinus Miseries**



Mfr's List Price 2.49
(D-426)

\$1.49

Coupon Expires
March 25, 1972

**New Awakening
7 1/4-oz. LEMON
HAND LOTION**



Mfr's List Price 1.09
(P-1123)

69¢

Coupon Expires
March 25, 1972

**REXALL
BREATHFRESH
Pocket Breath Freshener**



Mfr's List Price 89¢
(D-19)

49¢

Coupon Expires
March 25, 1972

**Rexall Men's Hair Spray
PROTEIN DRY
CONTROL, 8-oz.**



Mfr's List Price 1.39
(P-156)

89¢

Coupon Expires
March 25, 1972

BONUS BUY



Instant-load; auto flash advance. Includes camera with wrist strap. Magicube, Kodacolor film.

"Magimatic" Color
Camera Outfit

\$8⁸⁸

(X-399)

BONUS BUY

Easter Toys

A lovable bunny or duck with squeaking beak — to delight your little one!

97^c

(X-615)



BONUS BUY

West Bend

10" SKILLET

Quality teflon with porcelain-on-aluminum finish. Poppy or Avocado.



\$2⁹⁹

(X-363, 463)

BONUS BUY

West Bend 2-Quart

SAUCE PAN

Quality teflon with porcelain-on-aluminum finish. Poppy or Avocado.

\$2⁹⁹

(X-365, 6)



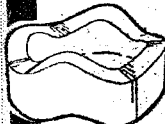
BONUS BUY

STACKABLE ASHTRAYS

Stain-proof plastic in decorator colors!

39^c

(X-392)



General Electric
KITCHEN CLOCK

A decorator item!

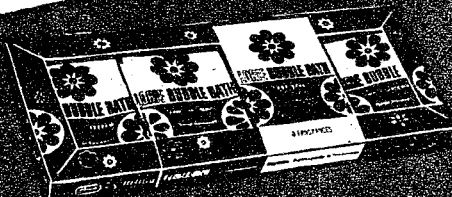
\$3⁹⁹

(X-144)



Rexall Cosmetics & Toiletries

FOR MFR'S LIST PRICE OF **1** Plus A Penny



Lorie Floral Bouquet

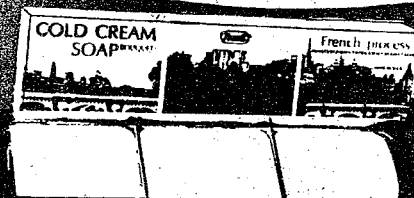
BUBBLE BATH

16 Packets

Mfr's List Price \$9.

(P-2070)

2 for 70^c



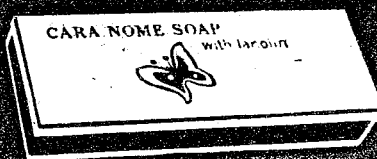
COLD CREAM SOAP

3 CAKES

Mfr's List Price \$2.00

(CN-2110-4)

2 for \$2⁰¹



CARA NOME SOAP with lanolin

Cara Nome **SOAP**

With **LANOLIN**

3 Cakes

Mfr's List Price \$2.00

(CN-402)

2 for \$2⁰¹



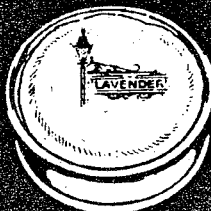
Cara Nome

CLEANSING CREAM

3 1/4-oz.
Mfr's List Price \$1.50

(CN-3162)

2 for \$1⁵¹



DUSTING POWDER

5-oz. Lavender

Mfr's List Price \$2.00

(P-3173)

2 for \$2⁰¹



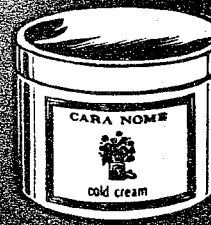
Spring Lily

AEROSOL COLOGNE

3-oz.
Mfr's List Price \$2.98

(CN-3112)

2 for \$2⁹⁹



Cara Nome

COLD CREAM

3 1/4-oz.

Mfr's List Price \$1.75

(CN-3160)

2 for \$1⁷⁶



Cara Nome

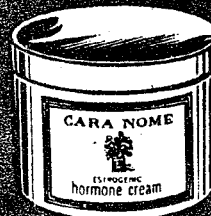
NIGHT CREAM

1 1/2-oz.

Mfr's List Price \$2.00

(CN-3154)

2 for \$2⁰¹



Cara Nome

HORMONE CREAM

1 1/2-oz.
Mfr's List Price \$2.51

(CN-3158)

2 for \$2⁵¹



Rexall

NAIL POLISH REMOVER

4-oz.
Mfr's List Price \$2.56

(P-1322)

2 for 56^c

Rexall Vitamins

FOR MFR'S LIST
PRICE OF

PLUS A
PENNY



Rexall VITAMIN B-12

50 mcg., 100's
Mfr's List Price \$3.29
(V-275)

2 for \$3³⁰



100's - 200 I. U. Rexall VITAMIN E CAPSULES

Mfr's List Price \$7.50
(V-281)

2 for \$7⁵¹



100's - 400 I. U. Rexall VITAMIN E CAPSULES

Mfr's List Price \$9.98
(V-282)

2 for \$9⁹⁹



100's 50 I. U. Rexall VITAMIN E ACETATE

Mfr's List Price \$3.30
(V-277)

2 for \$3³¹



100's - 100 I. U. Rexall VITAMIN E ACETATE

Mfr's List Price \$6.00
(V-278)

2 for \$6⁰¹



100 mg. - 250's Rexall VITAMIN C TABLETS

Mfr's List Price \$2.29
(V-254)

2 for \$2³⁰



100 mg. - 250's Rexall VITAMIN C CHEW- ABLE TABLETS

Mfr's List Price \$2.98
(V-255)

2 for \$2⁹⁹



250's - Rexall BREWER'S YEAST TABLETS

Mfr's List Price \$1.98
(V-939)

2 for \$1⁹⁹



100's - Rexall DICALCIUM PHOSPHATE w/ VIT. D. TABLETS

Mfr's List Price \$1.39
(V-715)

2 for \$1⁴⁰



100's - Rexall MINERALIZED B COMPLEX

Mfr's List Price \$5.95
(V-795)

2 for \$5⁹⁶



100's, Rexall Minuteman CHEWABLE MULT. VITAMINS w/IRON

Mfr's List Price \$3.09
(V-894)

2 for \$3¹⁰



100's - One Tablet Daily MULTIPLE VITAMINS

Mfr's List Price \$2.69
(V-955)

2 for \$2⁷⁰



100's - One Tablet Daily MULTIPLE VITA- MINS w/MINERALS

Mfr's List Price \$3.29
(V-958)

2 for \$3³⁰



100's - Rexall Panovite MULTIPLE VITAMINS

Mfr's List Price \$2.98
(V-695)

2 for \$2⁹⁹



100's - Rexall Panovite MULTIPLE VITA- MINS w/MINERALS

Mfr's List Price \$3.69
(V-815)

2 for \$3⁷⁰



100's Rexall Fortified VITAMIN B COMPLEX CAPS.

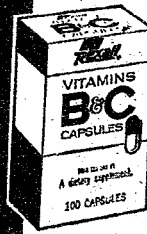
Mfr's List Price \$3.49
(V-271)

2 for \$3⁵⁰

BONUS BUY

NEW! FROM
REXALL

VITAMIN B & C CAPSULES



100's
Mfr's List Price \$3.69

\$3¹⁹

BONUS BUY

Rexall

MONACET APC TABLETS

100's
Mfr's List Price 99c

69^c



BONUS BUY

REXALL

Petroleum Jelly

Pound

Mfr's List Price 99c



69^c
(OI-332)



BONUS BUY REXALL FOAMING BATH OIL

Your choice Gardenia, Floral,
Pine or Lilac - Quart

Mfr's List Price \$1.29

79^c

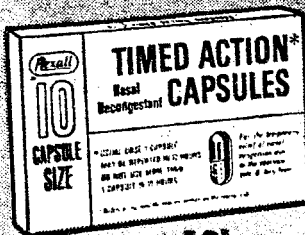
FOR MFR'S LIST
PRICE OF

PLUS A
PENNY

Rexall

Timed Action NASAL DECONGESTANT Capsules

Clears up sniffles, sneezes fast!

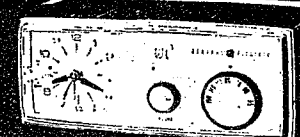


10's

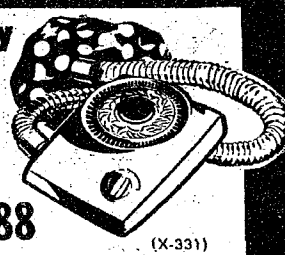
Mfr's List
Price \$1.39
(V-777)

2 for \$1⁴⁰

**BONUS
BUYS!**



**Lady Vanity
PORTABLE
HAIR
DRYER**



\$10⁸⁸

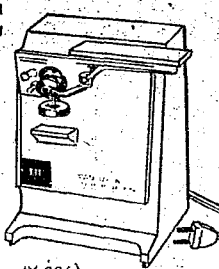
4 heat settings. Vinyl bonnet
w/matching bag.

(X-331)

**VAN WYCK
ELECTRIC
CAN
OPENER**

W/bottle opener,
cord storage area,
flip-top magnet unit.

\$6⁹⁹



(X-336)

**REXALL
Facial Tissues**

150's - 2-ply
White, Colors

**3 for
73¢**



(X-1884, 5)

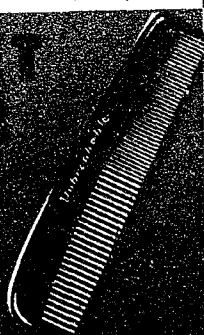
**WESTCLOX
BABY BEN
ALARM
CLOCK**

Luminous Dial
\$6⁸⁸



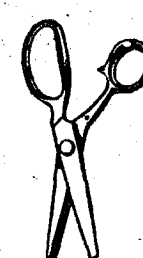
(X-296)

**POCKET
COMB**



**8-INCH
PINKING
SHEARS**

\$1⁹⁹



(X-4283)

FIRST-AID MUSTS

FOR MFR'S LIST
PRICE OF

PLUS A
PENNY



**REXALL
ADHESIVE
TAPE**

1"x5 yds. or 1/2"x10 yds.

Mfr's List Price 62¢
(W-4104, 7)

2 for 64¢

**REXALL
QUICK SWABS**

Double tip, 90's or
Single tip, 200's

Mfr's List Price 62¢

2 for 64¢



(N-45, 56)



**CLIFTON
FEVER
THERMOMETER**

Oral, Rectal, Stubby
Mfr's List Price \$1.95

2 for \$1⁹⁶

(W-1968-75, 1940-42)



**BABY
FEVER
THERMOMETER**

Mfr's List Price \$1.95

2 for \$1⁹⁶

(N-600-2)

BONUS BUY

**REXALL
NO
ASPIRIN
Acetaminophen**



For those who can't take aspirin. 5 grain, 100's

Mfr's List Price \$1.59

\$1²⁹

(X-1-77-1)

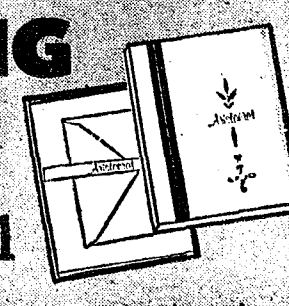
FOR MFR'S LIST
PRICE OF

PLUS A
PENNY

**WRITING
PAPER**

Assorted Styles
Mfr's List Price \$7.00

2 for \$1⁰¹



(B-656, 7, 946)

Bonus Buys

ON REXALL
RUBBER
GOODS

Personal Hygiene and Health-Aid Products for Everyone!



**KANTLEEK
Combination Water
Bottle-Syringe**

Three threaded syringe pipes, dual-heat
control, 2-qt. capacity in Harvest Gold
or Avocado Green.

Mfr's List Price \$7.19

(R-1672)

\$4⁵⁹



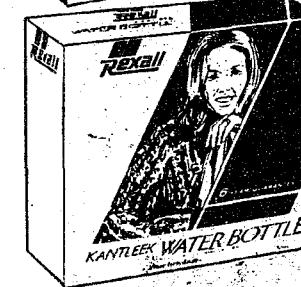
**KANTLEEK
Fountain Syringe**

With 3 threaded syringe pipes, 2-qt.
capacity in Harvest Gold or Avocado
Green.

Mfr's List Price \$5.89

(R-1662)

\$3⁷⁹



**KANTLEEK
HOT WATER
BOTTLE**

Dual-heat control, 2-qt. capacity in
Harvest Gold or Avocado Green.

Mfr's List Price \$5.59

(R-1682)

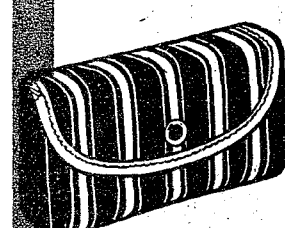
\$3⁴⁹

Petite Feminine

FOLDING SYRINGE

Blue or Yellow

Mfr's List Price \$3.95



\$2⁵⁹

(R-1201, 2)

Kantleek

**FEMININE
FOLDING SYRINGE**

Blue, Pink, Green or Amber

Mfr's List Price \$5.98



\$3⁴⁹

(R-312, 419)

REXALL ICE CAPS



Easy to use! Easy to store! In heavy rubberized fabric,
features leakproof lid and large opening for easy filling!

**Kantleek 6-Inch
ICE CAP**

Mfr's List Price \$2.09

(R-244)

\$1¹⁹

**Kantleek 9-Inch
ICE CAP**

Mfr's List Price \$2.49

(R-246)

\$1³⁹

**Kantleek 11-Inch
ICE CAP**

Mfr's List Price \$3.39

(R-247)

\$1⁹⁸

**BONUS
BUYS
on PANTY
HOSE**

**ONE-SIZE
"ALL-NUDE"
PANTY HOSE**

Reinforced "Y"
seams, control foot
and toe, choice
of 12 colors.

Mfr's List
Price \$1.36

(X-5910)

99¢

**ONE-SIZE
"BUDGET-PRICED"
PANTY HOSE**

Your choice of 3
top-fitting shades.

Mfr's List Price 98¢

(X-5910)

69¢

**2 FOR MFR'S LIST
PRICE OF 1
PLUS A PENNY!**

**REXALL
SACCHARIN
TABLETS**



Bottles
of 1,000

1/2 Gr.
Mfr's List
Price \$1.09

2 for \$1¹⁰

1/4 Gr.
Mfr's List
Price \$1.29

2 for \$1³⁰

1 Gr.
Mfr's List
Price \$1.79

2 for \$1⁸⁰

(X-5910, 6, 9)